

Anti-MMP2

CATALOG NO.: XAV-8274

SPECIES REACTIVITY: Human

SIZE: 660 amino acids; 74 kDa

BACKGROUND:

MMP2 may play a role in cleavage of gelatin type I and collagen types IV, V, VII, X.

SOURCE:

Anti-MMP2 polyclonal antibody is produced in rabbits immunized with a synthetic KLH-conjugated peptide corresponding to the amino acid residue 640-654 of MMP2 of human origin. Rabbit Ig G is purified by Protein G/A affinity chromatography method.

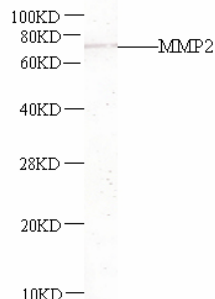
APPLICATION:

This polyclonal antibody can be used for the detection of synthetic KLH-conjugated peptide corresponding to the amino acid residue 640-654 of MMP2 of human origin by ELISA and Western blot; ELISA at 1:15000 and Western blot at a suggested dilution at 1 µg/ml in 5% skim milk / PBS buffer, and HRP conjugated anti-Rabbit IgG should be diluted in 1: 50,000 - 100,000 as second antibody.

This product is for research use only.

STORAGE:

MMP2 antibody is supplied in PBS buffer containing 0.02% sodium azide. For longer periods of storage, store at -20°C. Avoid repeat freeze-thaw cycle.



Western blot analysis of MMP2 expression in NIH/3T3 whole cell lysate using anti-MMP2 (**Cat. No. XAV-8274**) at a 1:100 dilution by chemiluminescent.

REFERENCES:

1. Collier I.E., et al, 1988, J. Biol. Chem. 263: 6579-6587