

JMJD4 Antibody

JMJD4: Jumonji domain-containing protein 4, JmjC domain-containing protein 4

CATALOG No.: 5379

BACKGROUND:

The jumonji domain-containing protein (JMJD) family is defined by the presence of the JmjC domain that is observed in several diverse species (reviewed in 1). While several JMJD proteins have been identified as being involved in chromatin regulation, histone demethylation and development, the JMJD4 has not been identified. JMJD4 is expressed in multiple tissues and At least three isoforms of JMJD4 are known to exist. This antibody will not recognize other members of the JMJD family.

SOURCE:

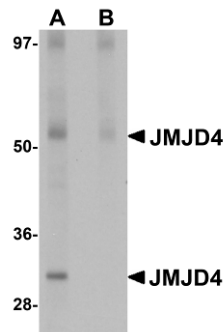
Rabbit polyclonal JMJD4 antibody was raised against a 17 amino acid peptide from near the amino terminus of human JMJD4 (GenBank accession no. NP_075383).

STORAGE:

JMJD4 antibody is supplied as immunoaffinity chromatography purified IgG in PBS containing 0.02% sodium azide. Store at 4°C, stable for one year.

APPLICATION:

JMJD4 antibody can be used for detection of JMJD4 by Western blot at 1 - 2 µg/ml. (Optimal dilution should be determined by user.) Human spleen tissue lysate can be used as positive control. JMJD4 antibody is human and rat reactive. **For research use only.**



Western blot analysis of JMJD4 in human spleen tissue lysate with JMJD4 antibody at 1 µg/ml in (A) the absence and (B) the presence of blocking peptide.

RELATED PRODUCTS:

Blocking peptide, Catalog No. **5379P**.
 Human Spleen Tissue Lysate, Catalog No. **1306**.
 JMJD1A Antibody, Catalog No. **5365**.
 JMJD1B Antibody, Catalog No. **5369**.
 JMJD1C Antibody, Catalog No. **5371**.

REFERENCES:

1. Takeuchi T, Watanabe Y, Takano-Shimizu T, et al. Roles of jumonji and jumonji family genes in chromatin regulation and development. *Dev. Dyn.* 2006; 235:2449-59.

(09-01D)