

MACC1 Antibody

MACC1 (IN): Metastasis associated in colon cancer 1

CATALOG No.: 5197

Background:

Metastasis associated in colon cancer 1 (MACC1) is a key regulator of the hepatocyte growth factor (HGF)-HGF receptor (MET) pathway, which is involved in cellular growth, epithelial-mesenchymal transition, angiogenesis, cell motility, invasiveness, and metastasis (1,2). MACC1 protein consists of four domains: ZU5, SH3, and two C-terminal death domains (DD). Expression of MACC1 was found significantly upregulated in malignant tissues (colon cancer of all stages as well as liver and lung metastases) compared to normal tissues or adenomas. MACC1 represents an early and crucial prognostic indicator for colon cancer metastasis that is independent of age, sex, tumor infiltration, nodal status, and lymph vessel invasion (3,4). Besides its involvement in signal transduction with the MET receptor, MACC1 also links MET signaling and apoptosis. MACC1 may also be an important therapeutic target for colorectal cancer treatment (5). At least two isoforms of MACC1 are known to exist.

SOURCE:

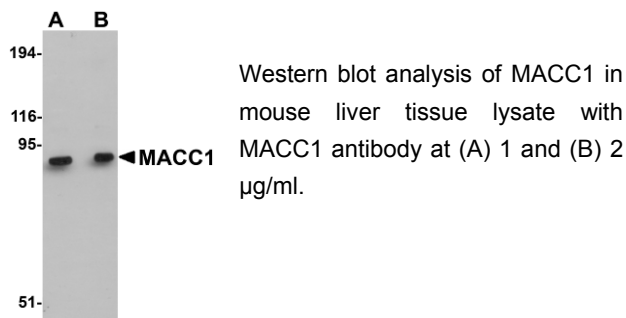
Rabbit polyclonal MACC1 antibody was raised against a 17 amino acid peptide near the center of human MACC1 (GenBank accession no. AJ313524).

APPLICATION:

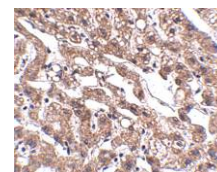
MACC1 antibody can be used for detection of MACC1 by Western blot at 1-2 µg/ml. (Optimal dilution should be determined by user.) Mouse liver tissue can be used as positive control. MACC1 antibody is human, mouse and rat reactive. For research use only.

STORAGE:

MACC1 antibody is supplied as immunoaffinity purified IgG in PBS containing 0.02% sodium azide. Store at 4°C, stable for one year.



Immunohistochemistry of MACC1 in human liver tissue with MACC1 antibody at 2.5 µg/ml.



RELATED PRODUCTS:

Blocking Peptide, Catalog No. **5197P**.
Mouse Liver Tissue Lysate, Catalog No. **1404**.
IRF7 Antibody (CT), Catalog No. **3941**.
OTUD4 Antibody, Catalog No. **5075**.
CLDN1 Antibody, Catalog No. **5187**.

REFERENCES:

- Stein U, Walther W, Arlt F, et al. MACC1, a newly identified key regulator of HGF-MET signaling, predicts colon cancer metastasis. *Nat. Med.* 2009; 15:59-67.
- Boardman LA. Overexpression of MACC1 leads to downstream activation of HGF/MET and potentiates metastasis and recurrence of colorectal cancer. *Genome Med.* 2009; 1:36.
- Stein U, Smith J, Walther W, et al. MACC1 controls Met: what a difference an Sp1 site makes. *Cell Cycle* 2009; 8:2467-9.
- Arlt F and Stein U. Colon cancer metastasis: MACC1 and Met as metastatic pacemakers. *Int. J. Biochem. Cell Biol.* 2009; epub.
- Kokoszyńska K, Krynski J, Rychlewski L, et al. Unexpected domain composition of MACC1 links MET signaling and apoptosis. *Acta Biochim. Pol.* 2009; 56:317-23.

12170 Flint Place
Poway, CA 92064
www.prosci-inc.com



Toll Free: 888-513-9525

Tel: 858-513-2638

Fax: 858-513-2692

techsupport@prosci-inc.com

(09-01D)