

ZBED3 Antibody

ZBED3 (NT): Zinc finger BED-type domain containing 3

CATALOG No.: 5123

Background:

Axin is a key modulator of the Wnt/ β -catenin pathway and acts as a scaffold protein in phosphorylating and degrading cytoplasmic β -catenin. ZBED3, a member of the Zinc finger BED-type domain containing superfamily, has been recently identified as an Axin-interacting protein and has been suggested to modulate the Wnt/ β -catenin signaling pathway (1). RNA interference (RNAi) experiments targeting ZBED3 RNA attenuated Wnt-induced β -catenin accumulation, lymphoid enhancer binding factor-1-dependent luciferase reporter activity, and Wnt gene expression (1). Despite its predicted molecular weight, ZBED3 often migrates at a higher position in SDS-PAGE. This antibody is predicted to have no cross-reactivity to ZBED1 or ZBED2.

SOURCE:

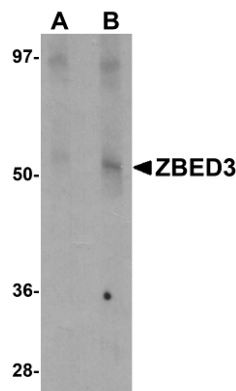
Rabbit polyclonal ZBED3 antibody was raised against a 17 amino acid peptide from near the amino terminus of human ZBED3 (GenBank accession no. NP_115743).

APPLICATION:

ZBED3 antibody can be used for detection of ZBED3 by Western blot at 1 - 2 μ g/ml. (Optimal dilution should be determined by user.) Rat lung tissue lysate can be used as positive control. ZBED3 antibody is human, mouse and rat reactive. **For research use only.**

STORAGE:

ZBED3 antibody is supplied as immunoaffinity purified IgG in PBS containing 0.02% sodium azide. Store at 4°C, stable for one year.



Western blot analysis of ZBED3 in rat lung tissue lysate with ZBED3 antibody at (A) 1 and (B) 2 μ g/ml.

RELATED PRODUCTS:

Blocking Peptide, Catalog No. **5123P**.
Rat Lung Tissue Lysate, Catalog No. **1462**.
ZBED1 Antibody, Catalog No. **5111**.
ZBED2 Antibody, Catalog No. **5121**.
ZBED3 Antibody (CT), Catalog No. **5113**.

REFERENCES:

1. Chen T, Li M, Ding Y, et al. Identification of Zinc-finger BED domain containing 3 (Zbed3) as a novel axin-interacting protein that activates Wnt/ β -catenin signaling. *J. Biol. Chem.* 2009; 284:6683-9. (09-01D)