

ZBED2 Antibody

ZBED2: Zinc finger BED-type domain containing 2

CATALOG No.: 5121

Background:

The ZBED2 protein possesses a BED-type zinc finger, a 50 to 60 amino acid domain that contains a characteristic motif with two highly conserved aromatic positions, as well as a shared pattern of cysteines and histidines that is predicted to form the zinc finger. ZBED2 was identified through a screening of 37 human gastric cancer cDNA libraries (1). While the function of this protein is unknown at this time, the presence of the zinc finger suggests that it may have DNA or RNA binding properties. This antibody is predicted to have no cross-reactivity to ZBED1 or ZBED3.

SOURCE:

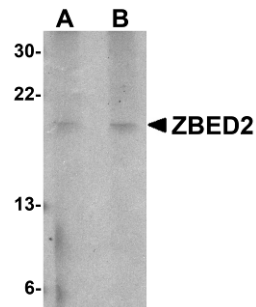
Rabbit polyclonal ZBED2 antibody was raised against a 15 amino acid peptide from near the amino terminus of human ZBED2 (GenBank accession no. NP_078784).

APPLICATION:

ZBED2 antibody can be used for detection of ZBED2 by Western blot at 1 - 2 µg/ml. (Optimal dilution should be determined by user.) A549 cell lysate can be used as positive control. ZBED2 antibody is human specific. **For research use only.**

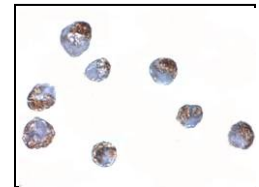
STORAGE:

ZBED2 antibody is supplied as immunoaffinity purified IgG in PBS containing 0.02% sodium azide. Store at 4°C, stable for one year.



Western blot analysis of ZBED2 in A549 cell lysate with ZBED2 antibody at (A) 1 and (B) 2 µg/ml.

Immunocytochemistry of ZBED2 in A549 cells with ZBED2 antibody at 5 µg/ml.



RELATED PRODUCTS:

Blocking Peptide, Catalog No. **5121P**.
A549 Cell Lysate, Catalog No. **1203**.
ZBED1 Antibody, Catalog No. **5111**.
ZBED3 Antibody (CT), Catalog No. **5113**.

REFERENCES:

1. Oh J-H, Yang JO, Hahn Y, et al. Transcriptome analysis of human gastric cancer. *Mamm. Genome* 2005; 16:942-54. (09-01D)