

S100A4 Antibody

S100 Calcium-binding Protein A4

CATALOG NO.: 51-116

HOST: Rabbit

CLONALITY: Polyclonal

INFORMATION:

S100 belongs to the family of calcium binding proteins such as calmodulin and troponin C. S100A is composed of an alpha and beta chain whereas S100B is composed of two beta chains. S100 protein is also expressed in the antigen presenting cells such as the Langerhans cells in skin and interdigitating reticulum cells in the paracortex of lymph nodes.

CONJUGATE: none

PHOSPHO-SPECIFIC: no

PURIFICATION: Immunoaffinity Chromatography

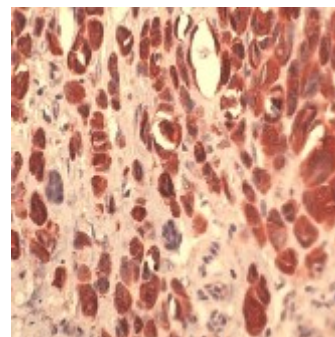
ISOTYPE: n/a

IMMUNOGEN: Antibody was raised against amino acids from the C-terminus of S100A4. (Human)

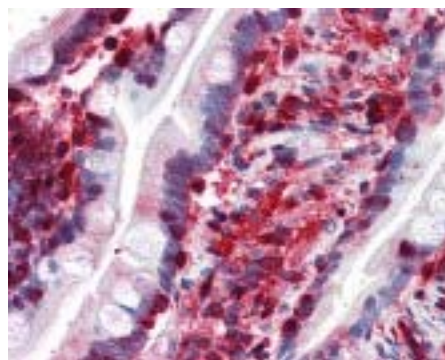
SPECIES REACTIVITY: n/a

TESTED APPLICATION(S): IHC

APPLICATION DETAILS: S100A4 antibody can be used for detection of S100A4 by IHC-paraffin (10 µg/ml).



Immunohistochemistry staining of S100A4 in melanoma using S100A4 antibody.



Immunohistochemistry staining of S100A4 in small intestine (formalin-fixed paraffin-embedded) using S100A4 antibody.

BUFFER: Antibody is supplied in 10 mM PBS, pH 7.4, BSA, sodium azide.

FORMULATION: Weight: 50 µg

STORAGE: S100A4 antibody can be stored at 4°C or -20°C. Avoid repeated freezing and thawing.

USER NOTES:

When working with antibodies, optimal dilutions and concentrations should be determined by the end user for each application. The information is provided as a guideline only. As with all ProSci antibodies, this antibody is **for research use only**.



12170 Flint Place
Poway, CA 92064
Tel: 858-513-2638
Fax: 858-513-2692
Toll Free: 888-513-9525
techsupport@prosci-inc.com
