

CRH Antibody

Corticotropin-Releasing Hormone

CATALOG NO.: 51-101

HOST: Rabbit

CLONALITY: Polyclonal

INFORMATION:

Corticotropin Releasing Factor (CRF), a 41 amino acids neuropeptide, belongs to a family of structurally related peptides including urocortin, sauvagine and urotensin I. CRF is critical in the regulation of the pituitary- adrenal gland axis, and in endocrine, autonomic and behavioral responses to stress. CRF is widely distributed in the brain and peripheral nervous system with the highest levels in the hypothalamic paraventricular nucleus.

CONJUGATE: none

PHOSPHO-SPECIFIC: no

PURIFICATION: Immunoaffinity Chromatography

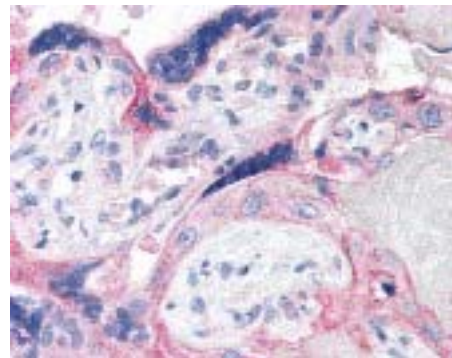
ISOTYPE: n/a

IMMUNOGEN: Antibody was raised against A synthetic peptide from C-terminus of human CRF protein (Human)

SPECIES REACTIVITY: M, R

TESTED APPLICATION(S): IHC

APPLICATION DETAILS: CRH antibody can be used for detection of CRH by IHC-paraffin (20 µg/ml).



Immunohistochemistry staining of CRH in placenta (formalin-fixed paraffin-embedded) using CRH antibody.

BUFFER: Antibody is supplied in 10 mM PBS, pH 7.4, BSA, sodium azide.

FORMULATION: Weight: 50 µg Volume: 250 µl
Concentration: 1.0 mg/ml

STORAGE: CRH antibody can be stored at 4°C or -20°C. Avoid repeated freezing and thawing.

USER NOTES:

When working with antibodies, optimal dilutions and concentrations should be determined by the end user for each application. The information is provided as a guideline only. As with all ProSci antibodies, this antibody is **for research use only**.