

## ABCC4 Antibody

*ATP-Binding Cassette, Sub-Family C*

**CATALOG NO.:** 51-096

**HOST:** Rabbit

**CLONALITY:** Polyclonal

**INFORMATION:**

Although increased levels of Pgp are likely to contribute to MDR in at least some tumor types, it has become evident that alternative, non-Pgp-mediated mechanisms of MDR exist. The multidrug resistance-associated protein (MRP1) has been identified by Cole and Deeley. The amino acid identity between MRP1 and Pgp is only 15%, and the homology to chloride channel CFTR only 19%. Paulusma, et al., cloned the cDNA for rat canalicular multispecific organic anion transporter (cMOAT or MRP2) which turned out to be a novel liver specific homolog of human MRP1. Recently, by screening database of human expressed sequences tags, Kool identified three new homologs of MRP1, called MRP3, MRP4 and MRP5. Suitable for use in Immunohistochemistry and Western Blot. Other applications have not been tested. Recognizes human MRP4. Does not recognize other species.

**CONJUGATE:** none

**PHOSPHO-SPECIFIC:** no

**PURIFICATION:** Affinity Chromatography

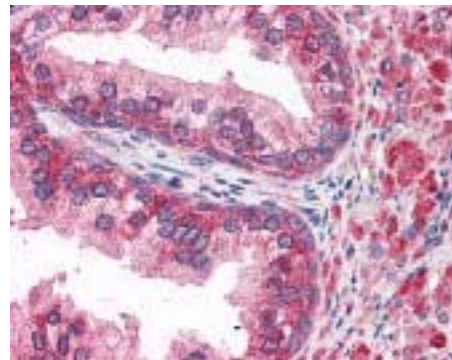
**ISOTYPE:** IgG

**IMMUNOGEN:** Antibody was raised against a recombinant peptide corresponding to aa 1249-1268 of human ABCC4. (Human)

**SPECIES REACTIVITY:** n/a

**TESTED APPLICATION(S):** WB, IHC

**APPLICATION DETAILS:** ABCC4 antibody can be used for detection of ABCC4 by IHC, WB (1:500), IHC-paraffin (1:100).



Immunohistochemistry staining of ABCC4 in prostate (formalin-fixed paraffin-embedded) using ABCC4 antibody.

**BUFFER:** Antibody is supplied in borate buffer, 0.05% BSA, 40% glycerol.

**FORMULATION:** Volume: 50  $\mu$ l

**STORAGE:** ABCC4 antibody can be stored at 4°C or -20°C. Avoid repeated freezing and thawing.

**USER NOTES:**

When working with antibodies, optimal dilutions and concentrations should be determined by the end user for each application. The information is provided as a guideline only. As with all ProSci antibodies, this antibody is **for research use only**.