

Adipophilin Monoclonal Antibody

Adipophilin

CATALOG NO.: 51-007

HOST: Mouse

CLONALITY: Monoclonal

INFORMATION:

Adipophilin (ADFP) Mouse anti-Human Monoclonal Antibody

CONJUGATE: FITC

PHOSPHO-SPECIFIC: no

PURIFICATION: Immunoaffinity Chromatography

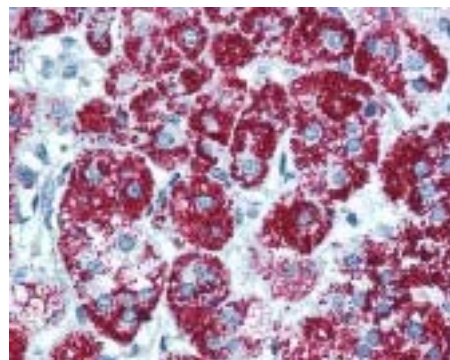
ISOTYPE: IgG1

IMMUNOGEN: Antibody was raised against a synthetic peptide corresponding to aa 5-27 from the N-terminus of human adipophilin. (Human)

SPECIES REACTIVITY: M, R, D

TESTED APPLICATION(S): IHC, FACS

APPLICATION DETAILS: Adipophilin monoclonal antibody can be used for detection of Adipophilin by Flo, IHC-paraffin (5 µg/ml), IHC-frozen (1:10 - 1:20).



Immunohistochemistry staining of Adipophilin in adrenal (formalin-fixed paraffin-embedded) using Adipophilin monoclonal antibody.

BUFFER: Antibody is supplied in Liquid.

FORMULATION: Volume: 50 µl Concentration: 0.2 mg/ml

STORAGE: Adipophilin monoclonal antibody can be stored at 4°C for short term storage. For long term storage, add glycerol (40-50%) and store at -20°C.

USER NOTES:

When working with antibodies, optimal dilutions and concentrations should be determined by the end user for each application. The information is provided as a guideline only. As with all ProSci antibodies, this antibody is **for research use only**.