

Rab 3 Antibody

(CT) rabphilin 3A Pan-Specific

CATALOG NO.: 50-188

DESCRIPTION:

Rabphilin-3A is a peripheral membrane protein that binds Ca²⁺ and phospholipids and is attached to synaptic vesicle membranes (Geppert et al., 1994; Li et al., 1994). The expression of rabphilin 3A is reduced in an animal model of Huntington's disease (Smith et al., 2005). Rabphilin can be phosphorylated at Ser234 by both CAM kinase II and PKA and this phosphorylation has been suggested to regulate neuronal activity during development in a synapse-specific manner (Fykse et al., 1995; Foletti and Scheller, 2001).

HOST:

Rabbit

CLONALITY:

Polyclonal

IMMUNOGEN:

Synthetic peptide corresponding to amino acid residues from the C-terminal region of rabphilin 3A.

SPECIES REACTIVITY:

H,M,R,B,Non-H primate,D

PURIFICATION:

Affinity purified

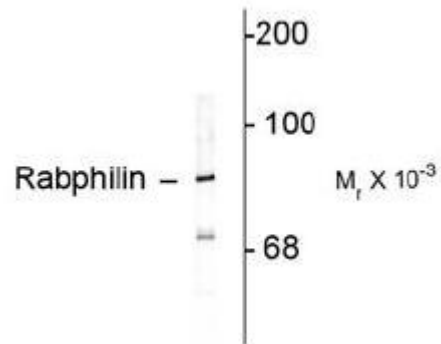
TESTED APPLICATION:

WB

APPLICATION DETAILS:

BUFFER:

Rab 3 antibody is supplied as affinity purified polyclonal antibody, 100 µl in 10 mM HEPES (pH 7.5), 150 mM NaCl, 100 µg per ml BSA and 50% glycerol.



Western blot of rat cortex lysate showing specific immunolabeling of the ~82k rabphilin 3A.

STORAGE:

Store at -20°C, stable at -20°C for at least 1 year.

REFERENCES:

Foletti DL, Scheller RH (2001) Developmental regulation and specific brain distribution of phosphorabphilin. J Neurosci 21:5461-5472.

Fykse EM, Li C, Sudhof TC (1995) Phosphorylation of rabphilin-3A by Ca²⁺/calmodulin- and cAMP-dependent protein kinases in vitro. J Neurosci 15:2385-2395.

Geppert M, Bolshakov VY, Siegelbaum SA, Takei K, De Camilli P, Hammer RE, Südhof TC (1994) The role of Rab3A in neurotransmitter release. Nature (Lond) 369:493-497.

USER NOTES:

Optimal dilutions/concentrations should be determined by the end user. The information provided is a guideline for product use. **This product is for research use only.**