

## ZBTB2 Antibody

*ZBTB2: Zinc finger and BTB domain-containing protein 2, ZNF437*

**CATALOG No.: 4961**

### BACKGROUND:

ZBTB2 is a zinc finger protein that also contains BTB (BR-C, ttk and bab) domain (1). While little is known about this protein or the related protein ZBTB1, ZBTB2 is thought to be phosphorylated in response to the DNA damage, probably by either ATM or ATR (2). At least two isoforms of ZBTB2 are known to exist. This ZBTB2 antibody will not cross-react with ZBTB1.

### SOURCE:

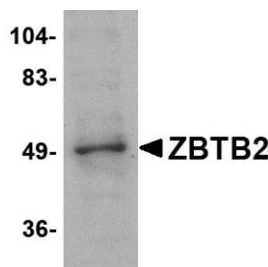
Rabbit polyclonal ZBTB2 antibody was raised against a 14 amino acid peptide near the center of human ZBTB2 (GenBank accession no. AAH50719).

### APPLICATION:

ZBTB2 antibody can be used for detection of ZBTB2 by Western blot at 1 – 2 µg/ml. (Optimal dilution should be determined by user.) PC-3 cell lysate can be used as positive control. ZBTB2 antibody is human specific. **For research use only.**

### STORAGE:

ZBTB2 antibody is supplied as immunoaffinity purified IgG in PBS containing 0.02% sodium azide. Store at 4°C, stable for one year.



Western blot analysis of ZBTB2 in PC-3 cell lysate with ZBTB2 antibody at 1 µg/ml.

### RELATED PRODUCTS:

Blocking Peptide, Catalog No. **4961P**.  
PC-3 Cell Lysate, Catalog No. **1216**.  
ZBTB1 Antibody, Catalog No. **4951**.

### REFERENCES:

1. Strausberg RL, Feingold EA, Grouse LH, et al. Generation and initial analysis of more than 15,000 full-length human and mouse cDNA sequences. *Proc. Natl. Acad. Sci. USA* 2002; 99:16899-903.
2. Matsuoka S, Ballif BA, Smogorzewska A, et al. ATM and ATR substrate analysis reveals extensive protein networks responsive to DNA damage. *Science* 2007; 1160-1166. (09-01D)