

Adenosine A2a Receptor Monoclonal Antibody

Adenosine A2a Receptor

CATALOG NO.: 49-998

HOST: Mouse

CLONALITY: Monoclonal

INFORMATION:

Adenosine A2a Receptor (ADORA2A) Mouse anti-Human Monoclonal Antibody

CONJUGATE: none

PHOSPHO-SPECIFIC: no

PURIFICATION: Protein G Column

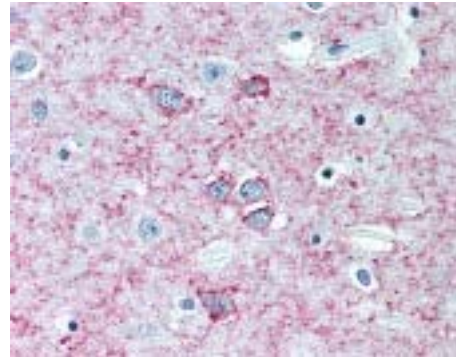
ISOTYPE: IgG2a

IMMUNOGEN: Antibody was raised against 6His-tagged full-length human recombinant Adenosine A2a receptor. Epitope mapped to the third intracellular loop. (Human)

SPECIES REACTIVITY: M, R, Rb, D, G

TESTED APPLICATION(S): WB, IHC, FACS

APPLICATION DETAILS: Adenosine A2a Receptor monoclonal antibody can be used for detection of Adenosine A2a Receptor by WB (1:1000), Flo, IHC-parafin (5 µg/ml), IHC-parafinfa (1 µg/ml).



Immunohistochemistry staining of Adenosine A2a Receptor in brain, putamen (formalin-fixed paraffin-embedded) using Adenosine A2a Receptor monoclonal antibody.

BUFFER: Antibody is supplied in PBS, pH 7.0, 0.01M EDTA before the addition of glycerol to 40%.

FORMULATION: Weight: 50 µg Concentration: 0.64 mg/ml

STORAGE: Adenosine A2a Receptor monoclonal antibody can be stored at 4°C for short term storage. For long term storage, aliquot and store at -20°C.

USER NOTES:

When working with antibodies, optimal dilutions and concentrations should be determined by the end user for each application. The information is provided as a guideline only. As with all ProSci antibodies, this antibody is **for research use only**.