

CCL5 Monoclonal Antibody

Chemokine

CATALOG NO.: 49-951

HOST: Mouse

CLONALITY: Monoclonal Clone 8.PP.11.

INFORMATION:

The antibody effectively inhibits chemotaxis of human monocytes, human lymphocytes and rat peritoneal macrophages induced by human RANTES. Suitable for use in Neutralization and ELISA Recognizes human RANTES.

CONJUGATE: none

PHOSPHO-SPECIFIC: no

PURIFICATION: Protein A Column

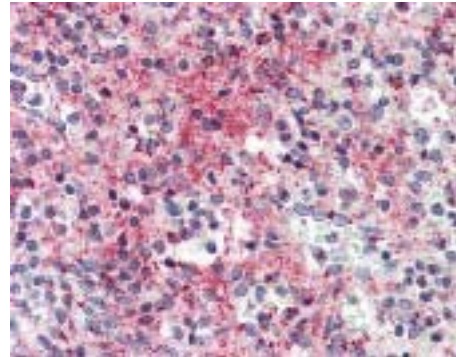
ISOTYPE: IgG2b

IMMUNOGEN: Antibody was raised against CCL5. (Human)

SPECIES REACTIVITY: H

TESTED APPLICATION(S): E, IHC, N

APPLICATION DETAILS: CCL5 monoclonal antibody can be used for detection of CCL5 by ELISA (minimum working concentration: 2 µg/ml maximum working concentration: 4 µg/ml), IHC-paraffin (minimum working concentration: 5 µg/ml), Neutralization.



Immunohistochemistry staining of CCL5 in spleen (formalin-fixed paraffin-embedded) using CCL5 Monoclonal antibody.

BUFFER: Antibody is supplied in PBS, pH 7.2, 40% glycerol. No preservative added.

FORMULATION: Weight: 50 µg

STORAGE: CCL5 monoclonal antibody can be stored at 4°C or -20°C. Avoid repeated freezing and thawing.

USER NOTES:

When working with antibodies, optimal dilutions and concentrations should be determined by the end user for each application. The information is provided as a guideline only. As with all ProSci antibodies, this antibody is **for research use only**.