

ABCA1 Monoclonal Antibody

ATP-Binding Cassette, Sub-Family A

CATALOG NO.: 49-889

HOST: Mouse

CLONALITY: Monoclonal

INFORMATION:

This membrane-associated protein is a member of the superfamily of ATP-binding cassette (ABC) transporters. ABC proteins transport various molecules across extracellular and intracellular membranes. ABC genes are divided into seven distinct subfamilies (ABC1, MDR/TAP, MRP, ALD, OABP, GCN20, White). This protein functions as a cholesterol efflux pump in the cellular lipid removal pathway. Mutations in this gene have been associated with Tangiers disease and familial high-density lipoprotein deficiency. ABCA1 (ATP-binding Cassette, Sub-family A, Member 1), also known as ABC1 (ABC Transporter 1) or CERP (Cholesterol efflux regulatory protein), is a member of the family of ATP-binding cassette (ABC) transporters. It is a cAMP-dependent, sulfonylurea-sensitive traffic ATPase, which is located at the plasma membrane and plays a key role in the cellular lipid removal pathway. ABCA1 supports apolipoprotein A-I (APOA1)-mediated cellular efflux of cholesterol and choline-phospholipids into the blood circulation; therefore, ABCA1 defects result in reduced plasma level of high density lipoproteins (HDL) combined with the tissue deposition of cholesteryl esters. More commonly, ABCA1 inherited defects are associated with a milder condition, so-called familial hypoalphalipoproteinemia (FHA). FHA patients, similar to Tangier disease patients, demonstrate a very evident decrease of HDL level; however, they lack clinical manifestations.

CONJUGATE: none

PHOSPHO-SPECIFIC: no

PURIFICATION: Immunoaffinity Chromatography

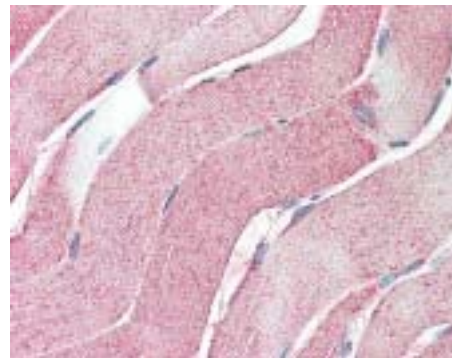
ISOTYPE: IgG1

IMMUNOGEN: Antibody was raised against recombinant ABCA1. (Human)

SPECIES REACTIVITY: M, C

TESTED APPLICATION(S): E, WB, IHC

APPLICATION DETAILS: ABCA1 monoclonal antibody can be used for detection of ABCA1 by WB, ELISA, IHC-paraffin (minimum working concentration: 10 µg/ml maximum working concentration: 10 µg/ml).



Immunohistochemistry staining of ABCA1 in skeletal muscle (formalin-fixed paraffin-embedded) using ABCA1 Monoclonal antibody.

BUFFER: Antibody is supplied in PBS, pH 7.4, 0.05% sodium azide.

FORMULATION: Weight: 50 µg

STORAGE: ABCA1 monoclonal antibody can be stored at 4°C or -20°C. Avoid repeated freezing and thawing.

USER NOTES:

When working with antibodies, optimal dilutions and concentrations should be determined by the end user for each application. The information is provided as a guideline only. As with all ProSci antibodies, this antibody is **for research use only**.