

HAND1 Antibody

Heart And Neural Crest Derivatives Expressed 1

CATALOG NO.: 49-676

HOST: Rabbit

CLONALITY: Polyclonal

INFORMATION:

Heart And Neural Crest Derivatives Expressed 1 (HAND1)
Rabbit anti-Human Polyclonal Antibody

CONJUGATE: none

PHOSPHO-SPECIFIC: no

PURIFICATION: Protein G Column

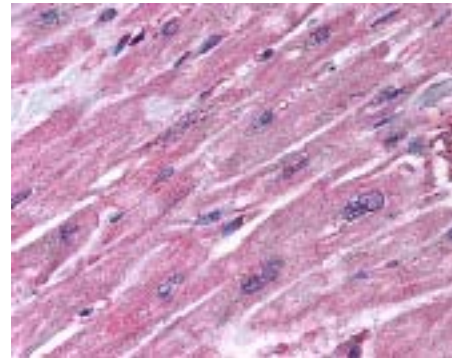
ISOTYPE: n/a

IMMUNOGEN: Antibody was raised against amino acids
1632-1644 of HAND1. (Human)

SPECIES REACTIVITY: H

TESTED APPLICATION(S): E, IHC

APPLICATION DETAILS: HAND1 antibody can be used for
detection of HAND1 by ELISA (1:0 - 1:1000), IHC-paraffin (10
µg/ml).



Immunohistochemistry staining of HAND1 in heart
(formalin-fixed paraffin-embedded) using HAND1
antibody.

BUFFER: Antibody is supplied in PBS, 0.1% sodium azide.

FORMULATION: Weight: 50 µg Concentration: 1 mg/ml

STORAGE: HAND1 antibody can be stored at -20°C for
long term storage, and 4°C for short term storage.

USER NOTES:

When working with antibodies, optimal dilutions and
concentrations should be determined by the end user for
each application. The information is provided as a
guideline only. As with all ProSci antibodies, this antibody
is **for research use only**.