

BMP6 Antibody

Bone Morphogenetic Protein 6

CATALOG NO.: 49-650

HOST: Rabbit

CLONALITY: Polyclonal

INFORMATION:

Bone morphogenetic proteins were originally identified by an ability of demineralized bone extract to induce endochondral osteogenesis in vivo in an extraskeletal site. Through molecular cloning, 7 BMP cDNAs, designated BMP1 through BMP7, have been recovered. BMP2 through BMP7, are members of the transforming growth factor-beta superfamily of regulatory molecules. From a high degree of amino acid sequence homology, BMP5, BMP6, and BMP7 are recognized as a subfamily of the BMPs.

CONJUGATE: none

PHOSPHO-SPECIFIC: no

PURIFICATION: Protein G Column

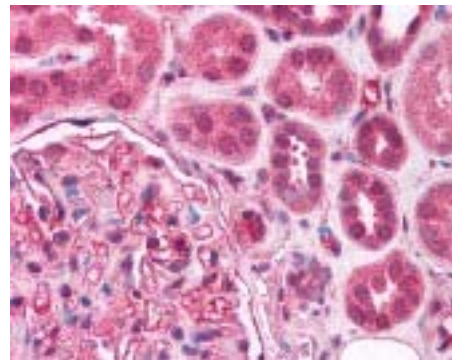
ISOTYPE: n/a

IMMUNOGEN: Antibody was raised against amino acids 40 to 55 of BMP6. (Human)

SPECIES REACTIVITY: H

TESTED APPLICATION(S): E, IHC

APPLICATION DETAILS: BMP6 antibody can be used for detection of BMP6 by ELISA (1:0 - 1:1000), IHC-paraffin (5 µg/ml).



Immunohistochemistry staining of BMP6 in kidney (formalin-fixed paraffin-embedded) using BMP6 antibody.

BUFFER: Antibody is supplied in PBS, 0.1% sodium azide.

FORMULATION: Weight: 50 µg Concentration: 1 mg/ml

STORAGE: BMP6 antibody can be stored at -20°C for long term storage, and 4°C for short term storage.

USER NOTES:

When working with antibodies, optimal dilutions and concentrations should be determined by the end user for each application. The information is provided as a guideline only. As with all ProSci antibodies, this antibody is **for research use only**.