

BMP2 Antibody

Bone Morphogenetic Protein 2

CATALOG NO.: 49-646

HOST: Rabbit

CLONALITY: Polyclonal

INFORMATION:

BMP2 belongs to the transforming growth factor-beta (TGFB) superfamily. Bone morphogenetic protein induces bone formation. BMP2 is a candidate gene for the autosomal dominant disease of fibrodysplasia (myositis) ossificans progressiva.

CONJUGATE: none

PHOSPHO-SPECIFIC: no

PURIFICATION: Protein G Column

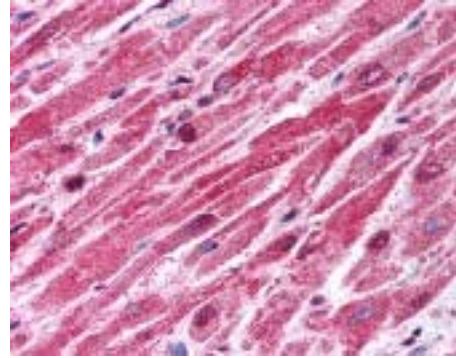
ISOTYPE: n/a

IMMUNOGEN: Antibody was raised against amino acids 86 to 102 of BMP2. (Human)

SPECIES REACTIVITY: H

TESTED APPLICATION(S): E, IHC

APPLICATION DETAILS: BMP2 antibody can be used for detection of BMP2 by ELISA (1:0 - 1:1000), IHC-paraffin (10 µg/ml).



Immunohistochemistry staining of BMP2 in heart (formalin-fixed paraffin-embedded) using BMP2 antibody.

BUFFER: Antibody is supplied in PBS, 0.09% sodium azide.

FORMULATION: Weight: 50 µg Volume: 50 µl
Concentration: 1 mg/ml

STORAGE: BMP2 antibody can be stored at -20°C for long term storage, and 4°C for short term storage.

USER NOTES:

When working with antibodies, optimal dilutions and concentrations should be determined by the end user for each application. The information is provided as a guideline only. As with all ProSci antibodies, this antibody is **for research use only**.