

## ADAM10 Antibody

*A Disintegrin And Metalloproteinase Domain 10*

**CATALOG NO.:** 49-378

**HOST:** Rabbit

**CLONALITY:** Polyclonal

**INFORMATION:**

Proinflammatory cytokine tumor necrosis factor- $\alpha$  (TNF- $\alpha$ ) contributes to a variety of inflammatory responses and programmed cell death. Notch receptor and its ligand participate in cell fate decisions during vertebrate development and are associated with several human disorders, including a T-cell lymphoma. TNF- $\alpha$ , notch and its ligand delta are all membrane-bound molecules, which are cleaved by proteases to release mature proteins or functional receptor. ADAM10, a metalloprotease-disintegrin in the family of mammalian ADAM (for a disintegrin and metalloprotease), was recently identified to cleave TNF- $\alpha$ , notch and its ligand delta (1-3). The genes encoding human, mouse, and bovine ADAM10 were recently cloned and designated ADAM 10, kuzbanian (KUZ), and MADM, respectively, (1,2,4). ADAM10 mRNA is expressed in a variety of human and bovine tissues (1,4).

**CONJUGATE:** none

**PHOSPHO-SPECIFIC:** no

**PURIFICATION:** DEAE-column Chromatography

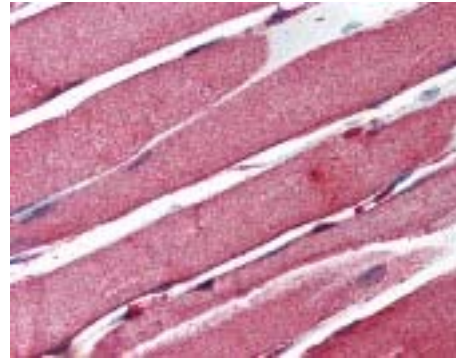
**ISOTYPE:** n/a

**IMMUNOGEN:** Antibody was raised against a region near the carboxy terminus of ADAM10. (Human)

**SPECIES REACTIVITY:** M, R, C

**TESTED APPLICATION(S):** E, WB, IHC, IF

**APPLICATION DETAILS:** ADAM10 antibody can be used for detection of ADAM10 by WB (1:500 - 1:2000), ELISA (1:5000 - 1:20000), IF (1:250 - 1:1000), IHC-paraffin (2.5  $\mu$ g/ml).



Immunohistochemistry staining of ADAM10 in skeletal muscle (formalin-fixed paraffin-embedded) using ADAM10 antibody.

**BUFFER:** Antibody is supplied in 0.02 M potassium phosphate, 0.15 M sodium chloride, pH 7.2, 0.02% sodium azide.

**FORMULATION:** Weight: 50  $\mu$ g Concentration: 1 mg/ml

**STORAGE:** ADAM10 antibody can be stored at 4°C or -20°C, Avoid repeated freezing and thawing.

**USER NOTES:**

When working with antibodies, optimal dilutions and concentrations should be determined by the end user for each application. The information is provided as a guideline only. As with all ProSci antibodies, this antibody is **for research use only**.