

## AGR2 Antibody

*Anterior Gradient 2 Homolog*

**CATALOG NO.:** 49-258

**HOST:** Rabbit

**CLONALITY:** Polyclonal

**INFORMATION:**

hAG-2 and hAG-3 are recently discovered human homologues of the secreted *Xenopus laevis* proteins XAG-1/2 (AGR-1/2) that are expressed in the cement gland, an ectodermal organ in the head associated with anteroposterior fate determination during early development(1). Although the roles of hAG-2 and hAG-3 in mammalian cells are unknown, both proteins share a high degree of protein sequence homology and lie adjacent to one another on chromosome 7p21.

**CONJUGATE:** none

**PHOSPHO-SPECIFIC:** no

**PURIFICATION:** Protein G Column

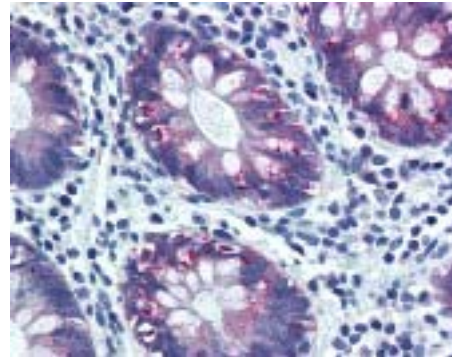
**ISOTYPE:** n/a

**IMMUNOGEN:** Antibody was raised against synthetic peptides corresponding to amino acids 55-72 of AGR2. (Human)

**SPECIES REACTIVITY:** H

**TESTED APPLICATION(S):** E, IHC

**APPLICATION DETAILS:** AGR2 antibody can be used for detection of AGR2 by ELISA (1:100 - 1:1000), IHC-paraffin (20 µg/ml).



Immunohistochemistry staining of AGR2 in colon (formalin-fixed paraffin-embedded) using AGR2 antibody.

**BUFFER:** Antibody is supplied in PBS, 0.05% BSA, 0.05% sodium azide.

**FORMULATION:** Weight: 50 µg Concentration: 0.5 mg/ml

**STORAGE:** AGR2 antibody can be stored at 4°C for short term storage. For long term storage, aliquot and store at -20°C.

**USER NOTES:**

When working with antibodies, optimal dilutions and concentrations should be determined by the end user for each application. The information is provided as a guideline only. As with all ProSci antibodies, this antibody is **for research use only**.