

ADAM17 Antibody

A Disintegrin And Metalloproteinase Domain 17

CATALOG NO.: 48-960

HOST: Rabbit

CLONALITY: Polyclonal

INFORMATION:

Tumor-necrosis factor- α is a proinflammatory cytokine and contributes to a variety of inflammatory disease responses and programmed cell death. TNF- α is synthesized as a 26K type II membrane-bound precursor that is cleaved by a convertase to generate secreted 17K mature TNF- α . TNF- α converting enzyme (TACE) protein was recently purified and the human and mouse TACE cDNAs were cloned by several groups separately. TACE is a membrane-bound metalloprotease-disintegrin in the family of mammalian ADAM (for a disintegrin and metalloprotease). TACE also processes other cell surface proteins, including TNF receptor, TGF α , the L-selectin adhesion molecule, and alpha-cleavage of amyloid protein precursor (APP). TACE mRNA is expressed in a variety of human and murine tissues. TACE was selected as one of the few targets in cytokine activation by the Eighth International Conference of the Inflammation Research Association. ADAM17 is a Metallopeptidase M12B type protease.

CONJUGATE: none

PHOSPHO-SPECIFIC: no

PURIFICATION: Immunoaffinity Chromatography

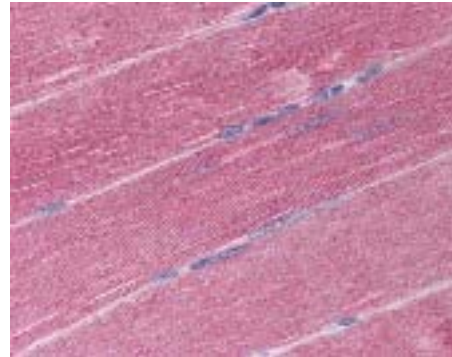
ISOTYPE: n/a

IMMUNOGEN: Antibody was raised against a synthetic peptide corresponding to C-terminal residues of ADAM17. (Human)

SPECIES REACTIVITY: H

TESTED APPLICATION(S): E, WB, IHC

APPLICATION DETAILS: ADAM17 antibody can be used for detection of ADAM17 by WB (1 μ g/ml), ELISA (1 μ g/ml), IHC-paraffin (20 μ g/ml).



Immunohistochemistry staining of ADAM17 in skeletal muscle (formalin-fixed paraffin embedded) using ADAM17 antibody.

BUFFER: Antibody is supplied in PBS, 0.01% sodium azide, 50% glycerol.

FORMULATION: Weight: 50 μ g Concentration: 0.5 mg/ml

STORAGE: ADAM17 antibody can be stored at 4°C or -20°C, Avoid repeated freezing and thawing.

USER NOTES:

When working with antibodies, optimal dilutions and concentrations should be determined by the end user for each application. The information is provided as a guideline only. As with all ProSci antibodies, this antibody is **for research use only**.