

## Nibrin Monoclonal Antibody

*Nibrin*

**CATALOG NO.:** 48-852

**HOST:** Mouse

**CLONALITY:** Monoclonal Clone 1D7.

**INFORMATION:**

Nijmegen breakage syndrome (NBS, nibrin) is an autosomal recessive chromosomal instability syndrome characterized by microcephaly, growth retardation, immunodeficiency, and cancer predisposition. The 1C3 antibody recognizes the 95 kDa NBS protein which contains a fork FHA head-associated domain that is adjacent to BRCT, a breast cancer C terminal domain, that has been implicated in protein-protein interactions. NBS is member of the Mre11/Rad50, p400 double-strand break repair complex involved in double-strand break repair and cell-cycle checkpoint functions. Mutations in this gene are associated with Nijmegen breakage syndrome, an autosomal recessive chromosomal instability syndrome characterized by microcephaly, growth retardation, immunodeficiency, and cancer predisposition. The encoded protein is a member of the MRE11/RAD50 double-strand break repair complex which consists of 5 proteins. This gene product is thought to be involved in DNA double-strand break repair and DNA damage-induced checkpoint activation. Two alternatively spliced transcript variants encoding different isoforms have been found for this gene.

**CONJUGATE:** none

**PHOSPHO-SPECIFIC:** no

**PURIFICATION:** Protein G Column

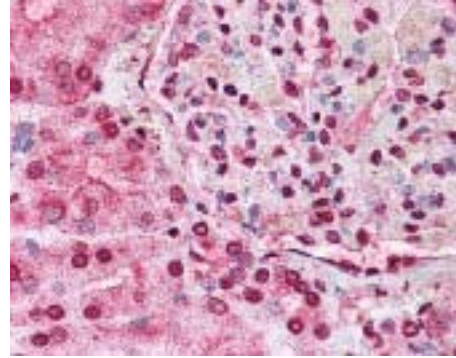
**ISOTYPE:** IgG1

**IMMUNOGEN:** Antibody was raised against the complete coding region of Nibrin. (Human)

**SPECIES REACTIVITY:** H

**TESTED APPLICATION(S):** WB, IHC, IP

**APPLICATION DETAILS:** Nibrin antibody can be used for detection of Nibrin by WB, IP, IHC-paraffin (5 µg/ml).



Immunohistochemistry staining of NBN in kidney (formalin-fixed paraffin-embedded) using NBN antibody.

**BUFFER:** Antibody is supplied in PBS.

**FORMULATION:** Weight: 50 µg Concentration: 1 mg/ml

**STORAGE:** Nibrin monoclonal antibody can be stored at 4°C or -20°C, Avoid repeated freezing and thawing.

**USER NOTES:**

When working with antibodies, optimal dilutions and concentrations should be determined by the end user for each application. The information is provided as a guideline only. As with all ProSci antibodies, this antibody is **for research use only**.