

## ABCB1 Antibody

*ATP-Binding Cassette*

**CATALOG NO.:** 48-673

**HOST:** Rabbit

**CLONALITY:** Polyclonal

**INFORMATION:**

ATP-Binding Cassette Sub-Family B Member 1 (ABCB1, also named P-glycoprotein) is a plasma membrane-associated multidrug transporter that utilizes the energy of ATP hydrolysis to pump toxic xenobiotics out of cells. Unique features of ABCB1 are its very broad substrate specificity and its basal ATPase activity in the absence of transport substrates. Human ABCB1 plays an important role in absorption, distribution, metabolism, excretion and toxicity of pharmacologically relevant drugs. It is responsible for decreased drug accumulation in multidrug-resistant cells and often mediates the development of resistance to anti-cancer drugs. This protein also functions as a transporter across the blood-brain barrier.

**CONJUGATE:** none

**PHOSPHO-SPECIFIC:** no

**PURIFICATION:** Immunoaffinity Chromatography

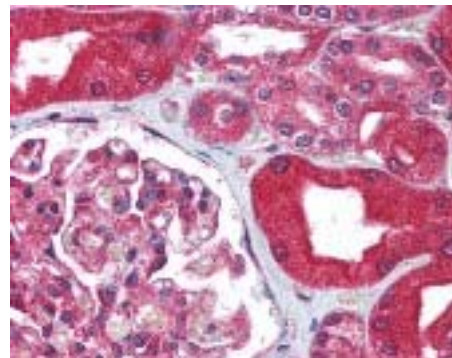
**ISOTYPE:** n/a

**IMMUNOGEN:** Antibody was raised against amino acids 262-277 of ABCB1. (Human)

**SPECIES REACTIVITY:** M, R, D, Mk

**TESTED APPLICATION(S):** E, WB, IHC

**APPLICATION DETAILS:** ABCB1 antibody can be used for detection of ABCB1 by WB (1:200 - 1:2000), ELISA (1:10000 - 1:50000), IHC-paraffin (5 µg/ml).



Immunohistochemistry staining of ABCB1 in kidney (formalin-fixed paraffin-embedded) using ABCB1 antibody.

**BUFFER:** Antibody is supplied in 0.02 M potassium phosphate, 0.15 M sodium chloride, pH 7.2, 0.01% sodium azide.

**FORMULATION:** Weight: 50 µg Concentration: 1 mg/ml

**STORAGE:** ABCB1 antibody can be stored at 4°C or -20°C, Avoid repeated freezing and thawing. Store undiluted.

**USER NOTES:**

When working with antibodies, optimal dilutions and concentrations should be determined by the end user for each application. The information is provided as a guideline only. As with all ProSci antibodies, this antibody is **for research use only**.