

## ABCB1 Antibody

*ATP-Binding Cassette*

**CATALOG NO.:** 48-396

**HOST:** Rabbit

**CLONALITY:** Polyclonal

**INFORMATION:**

Abcb1/MDR1/P glycoprotein is an ATP dependent transporter that mediates efflux of chemotherapeutic agents from the intracellular milieu. It has also been associated with volume-regulated chloride channel activity and basal to apical transendothelial migration of mononuclear phagocytes.

**CONJUGATE:** none

**PHOSPHO-SPECIFIC:** no

**PURIFICATION:** Immunoaffinity Chromatography

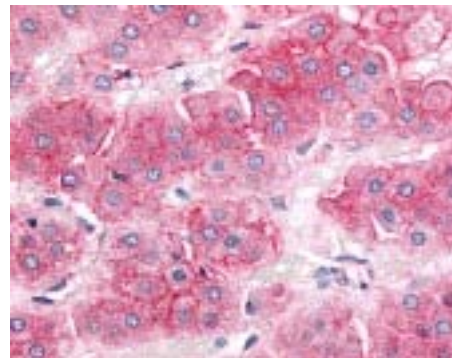
**ISOTYPE:** n/a

**IMMUNOGEN:** Antibody was raised against the cytoplasmic domain of ABCB1. (Human)

**SPECIES REACTIVITY:** H

**TESTED APPLICATION(S):** IHC

**APPLICATION DETAILS:** ABCB1 antibody can be used for detection of ABCB1 by IHC-paraffin (20 µg/ml).



Immunohistochemistry staining of ABCB1 in adrenal cortex (formalin-fixed paraffin-embedded) using ABCB1 antibody.

**BUFFER:** Antibody is supplied in PBS, 0.1% sodium azide.

**FORMULATION:** Weight: 50 µg Volume: 72 µl  
Concentration: 0.7 mg/ml

**STORAGE:** ABCB1 antibody can be stored at -70°C for long term storage, and 4°C for short term storage.

**USER NOTES:**

When working with antibodies, optimal dilutions and concentrations should be determined by the end user for each application. The information is provided as a guideline only. As with all ProSci antibodies, this antibody is **for research use only**.