

Wnt10a Antibody

Wnt10a: Wingless-type MMTV integration site family 10a

CATALOG No.:4639

BACKGROUND:

Wnt10a is a member of the Wnt family, a gene family that encodes secreted signaling proteins that play crucial roles in normal development such as regulation of cell fate and patterning during embryogenesis as well as neoplastic transformation (1,2). Elevated levels of Wnt10a have been detected in several human tumors and cancer cell lines including colorectal cancer and chronic lymphocytic leukemia and it has been suggested that uncontrolled Wnt signaling may contribute to the defect in apoptosis that characterizes these malignancies (3-5). Recently, a mutation in Wnt10a was found to be associated with odonto-onycho-dermal dysplasia, an autosomal recessive ectodermal dysplasia (6). Despite the high homology of Wnt10a to Wnt10b, this Wnt10a antibody will not cross-react with Wnt10b.

SOURCE:

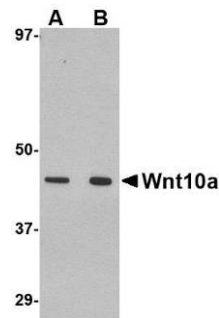
Rabbit polyclonal Wnt10a antibody was raised against a 14 amino acid peptide from near the carboxy terminus of human Wnt10a (GenBank accession no. Q9GZT5).

APPLICATIONS:

Wnt10a antibody can be used for detection of Wnt10a by Western blot at 1 – 2 µg/ml. (Optimal dilution should be determined by user.) RAW264.7 cell lysate can be used as positive control. Wnt10a antibody is human, mouse and rat reactive. **For research use only.**

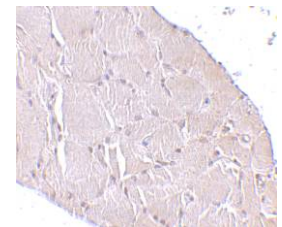
STORAGE:

Wnt10a antibody is supplied as immunoaffinity purified IgG in PBS containing 0.02% sodium azide. Store at 4°C, stable for one year.



Western blot analysis of Wnt10a in RAW264.7 cell lysate with Wnt10a antibody at (A) 1 and (B) 2 µg/ml.

Immunohistochemistry of Wnt10a in human skeletal muscle tissue cells with Wnt10a antibody at 10 µg/ml.



RELATED PRODUCTS:

Blocking Peptide, Catalog No. **4639P**.
RAW264.7 Cell Lysate, Catalog No. **1283**.
Wnt10b Antibody, Catalog No. **4619**.

REFERENCES:

1. Kelly GM, Lai CJ, and Moon RT. Expression of wnt10a in the central nervous system of developing zebrafish. *Dev. Biol.* 1993; 158:113-21.
2. Nusse R and Varmus RE. Wnt genes. *Cell* 1992; 69:1073-87.
3. Kirikoshi H, Sekihara H, and Katoh M. WNT10A and WNT6, clustered in human chromosome 2q35 region head-to-tail manner, are strongly coexpressed in SW480 cells. *Biochem. Biophys. Res. Commun.* 2001; 283:798-805.
4. Kirikoshi H, Inoue S, Sekihara H, et al. Expression of WNT10A in human cancer. *Int. J. Oncol.* 2001; 19:997-1001.
5. Lu D, Zhao Y, Tawatao R, et al. Activation of the Wnt signaling pathway in chronic lymphocytic leukemia. *Proc. Natl. Acad. Sci. USA* 2004; 101:3118-23.
6. Adaimy L, Chouery E, Megarbane H, et al. Mutation in WNT10A is associated with an autosomal recessive ectodermal dysplasia: the odonto-onycho-dermal dysplasia. *Am. J. Hum. Genet.* 2007; 81:821-8.

12170 Flint Place
Poway, CA 92064
www.prosci-inc.com



Toll Free: 888-513-9525

Tel: 858-513-2638

Fax: 858-513-2692

techsupport@prosci-inc.com

(08-01D)