

Apolipoprotein M Antibody

Apom, apolipoprotein M, G3a, NG20, 1190010019Rik

CATALOG NO.: 46-946

HOST:

Goat

CLONALITY:

Polyclonal

INFORMATION:

Apolipoprotein M Antibody.

SOURCE:

Apolipoprotein M antibody was raised against a synthetic peptide of Apolipoprotein M.

PROTEIN ACCESSION NUMBER(S) :

NP_061286.1

SPECIES REACTIVITY:

Mouse, Rat

TESTED APPLICATION:

E, WB

APPLICATION:

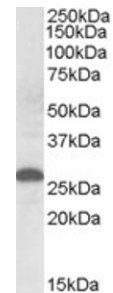
Peptide ELISA: antibody detection limit dilution 1:16000. Approx. 26kDa band observed in Human Placenta lysates (calculated MW of 21.3kDa according to NP_061286.1). The observed molecular weight corresponds to earlier findings in literature with different antibodies (Xu and Dahlbäck, J Biol Chem. 1999 Oct 29;274(44):31286-90.; PMID: 10531326). Recommended concentration: 0.3-1µg/ml.

PURIFICATION:

Purified from goat serum by ammonium sulphate precipitation followed by antigen affinity chromatography using the immunizing peptide.

BUFFER:

0.1mg of purified antibody, 0.5 mg/ml in Tris saline, 0.02% sodium azide, pH7.3 with 0.5% bovine serum albumin.



Western blot analysis of Apolipoprotein M in human placenta lysate (35µg protein in RIPA buffer) using Apolipoprotein M Antibody (0.5µg/ml).

STORAGE:

Aliquot and store at -20°C. Minimize freezing and thawing.

REFERENCE:

Karlsson H, Lindqvist H, Tagesson C, Lindahl M
Characterization of apolipoprotein M isoforms in low-density lipoprotein J Proteome Res. 2006 Oct;5(10):2685-90

USER NOTES:

When working with antibodies optimal dilutions/concentrations should be determined by the end user for each application. The information provided is a guideline for antibody use. As with all ProSci antibodies, this antibody is for research use only.