

HAX1 Antibody

HAX1, HCLS1 associated protein X-1, FLJ17042, FLJ18492, FLJ93803, HCLSBP1, HS1BP1, SCN3, HCLS1 (and PKD2) associated protein, HS1 binding protein, OTTHUMP00000034190

CATALOG NO.: 46-927

HOST:

Goat

CLONALITY:

Polyclonal

INFORMATION:

HAX1 Antibody. This antibody is expected to recognize both reported isoforms (NP_006109.2 and NP_001018238.1).

SOURCE:

Antibody was raised against a synthetic peptide of HAX1.

PROTEIN ACCESSION NUMBER(S) :

NP_006109.2, NP_001018238.1

SPECIES REACTIVITY:

H

TESTED APPLICATION:

E, WB

APPLICATION:

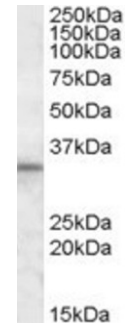
Peptide ELISA: antibody detection limit dilution 1:2,000.
Western Blot: Approx 33kDa band observed in Human Kidney, Liver and Testis lysates (calculated MW of 31.6kDa according to NP_006109.2). Recommended concentration: 1-3µg/ml.

PURIFICATION:

Purified from goat serum by ammonium sulphate precipitation followed by antigen affinity chromatography using the immunizing peptide.

BUFFER:

0.1mg of purified antibody, 0.5 mg/ml in Tris saline, 0.02% sodium azide, pH7.3 with 0.5% bovine serum albumin.



Western blot analysis of HAX1 in human testis lysate (35µg protein in RIPA buffer) using HAX1 antibody (1µg/ml).

STORAGE:

Aliquot and store at -20°C. Minimize freezing and thawing.

REFERENCE:

Chao JR, Parganas E, Boyd K, Hong CY, Opferman JT, Ihle JN. Hax1-mediated processing of HtrA2 by Parl allows survival of lymphocytes and neurons. Nature 2008 Mar 452 (7183): 98-102.

USER NOTES:

When working with antibodies optimal dilutions and concentrations should be determined by the end user for each application. The information provided is a guideline for antibody use. As with all ProSci antibodies, this antibody is for research use only.