

## TMPRSS2 Antibody

*transmembrane protease, serine 2, PRSS10, epitheliasin, TMPS2*

**CATALOG NO.:** 46-908

**HOST:**

Goat

**CLONALITY:**

Polyclonal

**INFORMATION:**

TMPRSS2 Antibody.

**SOURCE:**

Antibody was raised against a synthetic peptide of TMPRSS2.

**PROTEIN ACCESSION NUMBER(S) :**

NP\_005647.2

**SPECIES REACTIVITY:**

H

**TESTED APPLICATION:**

E, WB

**APPLICATION:**

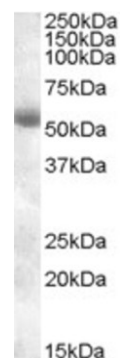
Peptide ELISA: antibody detection limit dilution 1:8,000.  
Western Blot: Approx 55kDa band observed in Human Pancreas lysates (calculated MW of 53.9kDa according to NP\_005647.2). Recommended concentration: 0.1-0.3µg/ml.

**PURIFICATION:**

Purified from goat serum by ammonium sulphate precipitation followed by antigen affinity chromatography using the immunizing peptide.

**BUFFER:**

0.1mg of purified antibody, 0.5 mg/ml in Tris saline, 0.02% sodium azide, pH7.3 with 0.5% bovine serum albumin.



Western blot analysis of TMPRSS2 in human pancreas lysate (35µg protein in RIPA buffer) using TMPRSS2 antibody (0.1µg/ml).

**STORAGE:**

Aliquot and store at -20°C. Minimize freezing and thawing.

**REFERENCE:**

Tomlins SA, Laxman B, Dhanasekaran SM, Helgeson BE, Cao X, Morris DS, Menon A, Jing X, Cao Q, Han B, Yu J, Wang L, Montie JE, Rubin MA, Pienta KJ, Roulston D, Shah RB, Varambally S, Mehra R, Chinnaiyan AM. Distinct classes of chromosomal rearrangements create oncogenic ETS gene fusions in prostate cancer. *Nature*. 2007 Aug 2;448(7153):595-9.

**USER NOTES:**

When working with antibodies optimal dilutions and concentrations should be determined by the end user for each application. The information provided is a guideline for antibody use. As with all ProSci antibodies, this antibody is for research use only.