

RAB23 Antibody

RAB23, RAB23, member RAS oncogene family, RP3-496N17.3, DKFZp781H0695, HSPC137, MGC8900, OTTHUMP00000040021, RAB family small GTP binding protein RAB 23, Ras-related protein Rab-23

CATALOG NO.: 46-889

HOST:

Goat

CLONALITY:

Polyclonal

INFORMATION:

RAB23 Antibody. Both reported variants (NP_057361.3; NP_899050.1) represent identical protein.

SOURCE:

Antibody was raised against a synthetic peptide of RAB23.

PROTEIN ACCESSION NUMBER(S) :

NP_057361.3, NP_899050.1

SPECIES REACTIVITY:

H, M, R, D

TESTED APPLICATION:

E, WB

APPLICATION:

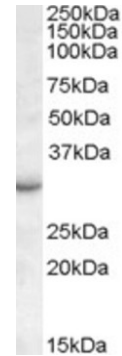
Peptide ELISA: antibody detection limit dilution 1:64,000.
Western Blot: Approx 30kDa band observed in Mouse Eye lysates (calculated MW of 26.7kDa according to Human NP_057361.3 and 26.8kDa according to Mouse NP_033025.2). The observed molecular weight co

PURIFICATION:

Purified from goat serum by ammonium sulphate precipitation followed by antigen affinity chromatography using the immunizing peptide.

BUFFER:

0.1mg of purified antibody, 0.5 mg/ml in Tris saline, 0.02% sodium azide, pH7.3 with 0.5% bovine serum albumin.



Western blot analysis of RAB23 in mouse eye lysate (35µg protein in RIPA buffer) using RAB23 antibody (0.1µg/ml).

STORAGE:

Aliquot and store at -20°C. Minimize freezing and thawing.

REFERENCE:

Yoshimura S, Egerer J, Fuchs E, Haas AK, Barr FA. Functional dissection of Rab GTPases involved in primary cilium formation. J Cell Biol. 2007 Jul 30;178(3):363-9. Epub 2007 Jul 23.

USER NOTES:

When working with antibodies optimal dilutions and concentrations should be determined by the end user for each application. The information provided is a guideline for antibody use. As with all ProSci antibodies, this antibody is for research use only.