

GPR142 Antibody

GPR142, *G protein-coupled receptor 142*, *PGR2*

CATALOG NO.: 46-853

HOST:

Goat

CLONALITY:

Polyclonal

INFORMATION:

GPR142 Antibody.

SOURCE:

Antibody was raised against a synthetic peptide of GPR142.

PROTEIN ACCESSION NUMBER(S) :

NP_861455.1

SPECIES REACTIVITY:

H

TESTED APPLICATION:

E, WB

APPLICATION:

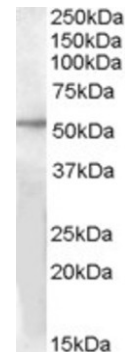
Peptide ELISA: antibody detection limit dilution 1:32,000.
Western Blot: Approx 50-55kDa band observed in Human Liver lysates (calculated MW of 51.1kDa according to NP_861455.1). Recommended concentration: 1-3µg/ml.

PURIFICATION:

Purified from goat serum by ammonium sulphate precipitation followed by antigen affinity chromatography using the immunizing peptide.

BUFFER:

0.1mg of purified antibody, 0.5 mg/ml in Tris saline, 0.02% sodium azide, pH7.3 with 0.5% bovine serum albumin.



Western blot analysis of GPR142 in human liver lysate (35µg protein in RIPA buffer) with (B) and without (A) blocking with the immunising peptide using GPR142 antibody (1µg/ml).

STORAGE:

Aliquot and store at -20°C. Minimize freezing and thawing.

REFERENCE:

Süsens U, Hermans-Borgmeyer I, Urny J, Schaller HC. Characterisation and differential expression of two very closely related G-protein-coupled receptors, GPR139 and GPR142, in mouse tissue and during mouse development. *Neuropharmacology*. 2006 Mar;50(4):512-20. Epub 2005 Dec 27.

USER NOTES:

When working with antibodies optimal dilutions and concentrations should be determined by the end user for each application. The information provided is a guideline for antibody use. As with all ProSci antibodies, this antibody is for research use only.