

FMR1 Antibody

FMRI, fragile X mental retardation 1, FMRP, FRAXA, MGC87458

CATALOG NO.: 46-842

HOST:

Goat

CLONALITY:

Polyclonal

INFORMATION:

FMR1 Antibody.

SOURCE:

Antibody was raised against a synthetic peptide of FMR1.

PROTEIN ACCESSION NUMBER(S) :

NP_002015.1

SPECIES REACTIVITY:

H, M, R, D

TESTED APPLICATION:

E, WB

APPLICATION:

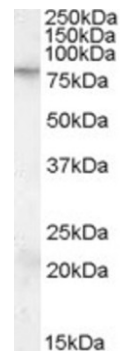
Peptide ELISA: antibody detection limit dilution 1:128,000.
Western Blot: Approx 80kDa band observed in lysates of cell line KELLY (calculated MW of 71.2kDa according to NP_002015.1). The observed molecular weight corresponds to earlier findings in litera

PURIFICATION:

Purified from goat serum by ammonium sulphate precipitation followed by antigen affinity chromatography using the immunizing peptide.

BUFFER:

0.1mg of purified antibody, 0.5 mg/ml in Tris saline, 0.02% sodium azide, pH7.3 with 0.5% bovine serum albumin.



Western blot analysis of FMR1 in KELLY cell lysate (35µg protein in RIPA buffer) using FMR1 antibody (0.1µg/ml).

STORAGE:

Aliquot and store at -20°C. Minimize freezing and thawing.

REFERENCE:

Hanson JE, Blank M, Valenzuela RA, Garner CC, Madison DV. The functional nature of synaptic circuitry is altered in area CA3 of the hippocampus in a mouse model of Down's syndrome. *J Physiol.* 2007 Feb 15;579(Pt 1):53-67. Epub 2006 Dec 7.

USER NOTES:

When working with antibodies optimal dilutions and concentrations should be determined by the end user for each application. The information provided is a guideline for antibody use. As with all ProSci antibodies, this antibody is for research use only.