

DAGLA Antibody

DAGLA, diacylglycerol lipase, alpha, C11orf11, DAGL(ALPHA), DAGLALPHA, NSDDR, diacylglycerol lipase alpha, neural stem cell-derived dendrite regulator, KIAA0659

CATALOG NO.: 46-829

HOST:

Goat

CLONALITY:

Polyclonal

INFORMATION:

DAGLA Antibody.

SOURCE:

Antibody was raised against a synthetic peptide of DAGLA.

PROTEIN ACCESSION NUMBER(S) :

NP_006124.1

SPECIES REACTIVITY:

H, M, R

TESTED APPLICATION:

E, WB

APPLICATION:

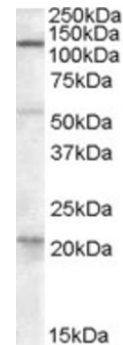
Peptide ELISA: antibody detection limit dilution 1:128,000.
Western Blot: Approx 125kDa band observed in Human Liver lysates (calculated MW of 115kDa according to NP_006124.1). Recommended concentration: 0.3-1µg/ml. Some minor background is detected

PURIFICATION:

Purified from goat serum by ammonium sulphate precipitation followed by antigen affinity chromatography using the immunizing peptide.

BUFFER:

0.1mg of purified antibody, 0.5 mg/ml in Tris saline, 0.02% sodium azide, pH7.3 with 0.5% bovine serum albumin.



Western blot analysis of DAGLA in human liver lysate (35µg protein in RIPA buffer) using DAGLA antibody (0.3µg/ml).

STORAGE:

Aliquot and store at -20°C. Minimize freezing and thawing.

REFERENCE:

Bisogno T, Howell F, Williams G, Minassi A, Cascio MG, Ligresti A, Matias I, Schiano-Moriello A, Paul P, Williams EJ, Gangadharan U, Hobbs C, Di Marzo V, Doherty P. Cloning of the first sn1-DAG lipases points to the spatial and temporal regulation of endocannabinoid signaling in the brain. *J Cell Biol.* 2003 Nov 10;163(3):463-8.

USER NOTES:

When working with antibodies optimal dilutions and concentrations should be determined by the end user for each application. The information provided is a guideline for antibody use. As with all ProSci antibodies, this antibody is for research use only.