

## Apolipoprotein B Antibody

*APOB, apolipoprotein B (including Ag(x) antigen), FLDB, apoB-100, apoB-48, apolipoprotein B, apolipoprotein B48*

**CATALOG NO.: 46-802**

**HOST:**

Goat

**CLONALITY:**

Polyclonal

**INFORMATION:**

Apolipoprotein B Antibody.

**SOURCE:**

Antibody was raised against a synthetic peptide of Apolipoprotein B.

**PROTEIN ACCESSION NUMBER(S) :**

NP\_000375.2

**SPECIES REACTIVITY:**

H

**TESTED APPLICATION:**

E, WB

**APPLICATION:**

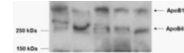
Peptide ELISA: antibody detection limit dilution 1:32,000.  
Western Blot: Bands corresponding to the expected sizes of ApoB100 and ApoB48 were detected in Human serum samples from five different individuals. Recommended concentration: 0.3-1µg/ml.

**PURIFICATION:**

Purified from goat serum by ammonium sulphate precipitation followed by antigen affinity chromatography using the immunizing peptide.

**BUFFER:**

0.1mg of purified antibody, 0.5 mg/ml in Tris saline, 0.02% sodium azide, pH7.3 with 0.5% bovine serum albumin.



Western blot analysis of Apolipoprotein B in human serum lysate using Apolipoprotein B antibody (0.5µg/ml). Data kindly provided by Yan Xie and NO Davidson, Washington USA. This antibody showed background below 150kDa in serum samples.

**STORAGE:**

Aliquot and store at -20°C. Minimize freezing and thawing.

**REFERENCE:**

Benn M, Nordestgaard BG, Jensen JS, Tybjaerg-Hansen A. Polymorphisms in apolipoprotein B and risk of ischemic stroke. J Clin Endocrinol Metab. 2007 Sep;92(9):3611-7

**USER NOTES:**

When working with antibodies optimal dilutions and concentrations should be determined by the end user for each application. The information provided is a guideline for antibody use. As with all ProSci antibodies, this antibody is for research use only.