

ABCA9 Antibody

ABCA9, ATP-binding cassette, sub-family A (ABC1), member 9, DKFZp686F2450, EST640918, MGC75415, ATP-binding cassette A9, ATP-binding cassette, sub-family A, member 9

CATALOG NO.: 46-792

HOST:

Goat

CLONALITY:

Polyclonal

INFORMATION:

ABCA9 Antibody.

SOURCE:

Antibody was raised against a synthetic peptide of ABCA9.

PROTEIN ACCESSION NUMBER(S) :

NP_525022.2

SPECIES REACTIVITY:

H

TESTED APPLICATION:

E, WB

APPLICATION:

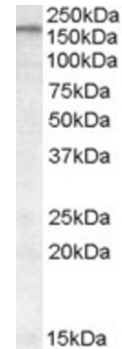
Peptide ELISA: antibody detection limit dilution 1:128,000.
Western Blot: Approx. 170kDa band observed in Human Brain (Cerebellum) lysates (calculated MW of 184kDa according to NP_525022.2). Recommended concentration: 0.1-0.3µg/ml.

PURIFICATION:

Purified from goat serum by ammonium sulphate precipitation followed by antigen affinity chromatography using the immunizing peptide.

BUFFER:

0.1mg of purified antibody, 0.5 mg/ml in Tris saline, 0.02% sodium azide, pH7.3 with 0.5% bovine serum albumin.



Western blot analysis of ABCA9 in cerebellum lysate (35µg protein in RIPA buffer) using ABCA9 antibody (0.1µg/ml).

STORAGE:

Aliquot and store at -20°C. Minimize freezing and thawing.

REFERENCE:

Piehler A, Kaminski WE, Wenzel JJ, Langmann T, Schmitz G Molecular structure of a novel cholesterol-responsive A subclass ABC transporter, ABCA9 Biochem Biophys Res Commun. 2002 Jul 12;295(2):408-16

USER NOTES:

When working with antibodies optimal dilutions and concentrations should be determined by the end user for each application. The information provided is a guideline for antibody use. As with all ProSci antibodies, this antibody is for research use only.