

Annexin A1 Antibody

ANXA1, annexin A1, ANXI, LPC1, annexin I, annexin I (lipocortin I), lipocortin I

CATALOG NO.: 46-785

HOST:

Goat

CLONALITY:

Polyclonal

INFORMATION:

Annexin A1 Antibody.

SOURCE:

Annexin A1 antibody was raised against a synthetic peptide of Annexin A1.

PROTEIN ACCESSION NUMBER(S) :

NP_000691.1

SPECIES REACTIVITY:

Human, Mouse, Rat, Dog, Cow, Pig

TESTED APPLICATION:

E, WB

APPLICATION:

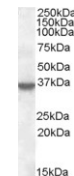
Peptide ELISA: antibody detection limit dilution 1:32,000. Western Blot: Approx 35kDa band observed in Human lysates of cell lines A431 and K562 (calculated MW of 38.7kDa according to NP_000691.1). The observed molecular weight corresponds to earlier findings in literature with different antibodies (Paweletz et al , Cancer Res. 2000 Nov15;60(22):6293-7. PMID: 11103786). Recommended concentration: 0.5-1.5 µg/ml.

PURIFICATION:

Purified from goat serum by ammonium sulphate precipitation followed by antigen affinity chromatography using the immunizing peptide.

BUFFER:

0.1mg of purified antibody, 0.5 mg/ml in Tris saline, 0.02% sodium azide, pH7.3 with 0.5% bovine serum albumin.



Western blot analysis of Annexin A1 in A431 lysate (35µg protein in RIPA buffer) using Annexin A1 antibody

(0.5µg/ml).

STORAGE:

Aliquot and store at -20°C. Minimize freezing and thawing.

REFERENCE:

Fan X, Krahling S, Smith D, Williamson P, Schlegel RA. Macrophage surface expression of annexins I and II in the phagocytosis of apoptotic lymphocytes. Mol Biol Cell. 2004 Jun;15(6):2863-72. Epub 2004 Apr 2.

USER NOTES:

When working with antibodies optimal dilutions/concentrations should be determined by the end user for each application. The information provided is a guideline for antibody use. As with all ProSci antibodies, this antibody is for research use only.