

ALOX15 Antibody

ALOX15, arachidonate 15-lipoxygenase, 15-LOX-1, 15-LOX2

CATALOG NO.: 46-769

HOST:

Goat

CLONALITY:

Polyclonal

INFORMATION:

ALOX15 Antibody.

SOURCE:

ALOX15 antibody was raised against a synthetic peptide of ALOX15.

PROTEIN ACCESSION NUMBER(S) :

NP_001131.3

SPECIES REACTIVITY:

Human

TESTED APPLICATION:

E, WB

APPLICATION:

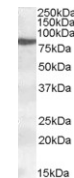
Peptide ELISA: Antibody detection limit dilution 1:32,000.
Western Blot: Approx. 80kDa band observed in nuclear lysates of cell line HeLa (calculated MW of 74.8kDa according to NP_001131.3). Recommended concentration: 0.2-0.5µg/ml.

PURIFICATION:

Purified from goat serum by ammonium sulphate precipitation followed by antigen affinity chromatography using the immunizing peptide.

BUFFER:

0.1mg of purified antibody, 0.5 mg/ml in Tris saline, 0.02% sodium azide, pH7.3 with 0.5% bovine serum albumin.



Western blot analysis of ALOX15 in HeLa lysate (35µg protein in RIPA buffer) using ALOX15 antibody (1µg/ml).

STORAGE:

Aliquot and store at -20°C. Minimize freezing and thawing.

REFERENCE:

McDuffie M, Maybee NA, Keller SR, Stevens BK, Garmey JC, Morris MA, Kropf E, Rival C, Ma K, Carter JD, Tersey SA, Nunemaker CS, Nadler JL. Nonobese diabetic (NOD) mice congenic for a targeted deletion of 12/15-lipoxygenase are protected from autoimmune diabetes. *Diabetes*. 2008 Jan;57(1):199-208. Epub 2007 Oct 16.

USER NOTES:

When working with antibodies optimal dilutions/concentrations should be determined by the end user for each application. The information provided is a guideline for antibody use. As with all ProSci antibodies, this antibody is for research use only.