

BTLA Antibody

BTLA, B and T lymphocyte associated, BTLA1, CD272, FLJ16065, MGC129743, B and T lymphocyte attenuator

CATALOG NO.: 46-766

HOST:

Goat

CLONALITY:

Polyclonal

INFORMATION:

BTLA Antibody. This antibody is expected to recognize both reported isoforms (NP_861445.3; NP_001078826.1).

SOURCE:

BTLA antibody was raised against a synthetic peptide of BTLA.

PROTEIN ACCESSION NUMBER(S) :

NP_861445.3, NP_001078826.1

SPECIES REACTIVITY:

Human, Mouse, Rat

TESTED APPLICATION:

E, WB

APPLICATION:

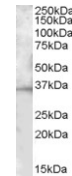
Peptide ELISA: Antibody detection limit dilution 1:4,000.
Western Blot: Approx. 35kDa band observed in Mouse Spleen lysates (calculated MW of 32.8kDa according to Human NP_861445.3 and of 34.2kDa according to Mouse NP_001032808.2). Recommended concentration: 1-3µg/ml.

PURIFICATION:

Purified from goat serum by ammonium sulphate precipitation followed by antigen affinity chromatography using the immunizing peptide.

BUFFER:

0.1mg of purified antibody, 0.5 mg/ml in Tris saline, 0.02% sodium azide, pH7.3 with 0.5% bovine serum albumin.



Western blot analysis of BTLA in Human Placenta lysate (35µg protein in RIPA buffer) using BTLA antibody (0.03µg/ml).

STORAGE:

Aliquot and store at -20°C. Minimize freezing and thawing.

REFERENCE:

Lasaro MO, Tatsis N, Hensley SE, Whitbeck JC, Lin SW, Rux JJ, Wherry EJ, Cohen GH, Eisenberg RJ, Ertl HC. Targeting of antigen to the herpesvirus entry mediator augments primary adaptive immune responses. Nat Med. 2008 Feb;14(2):205-12. Epub 2008 Jan 13.

USER NOTES:

When working with antibodies optimal dilutions/concentrations should be determined by the end user for each application. The information provided is a guideline for antibody use. As with all ProSci antibodies, this antibody is for research use only.