

Endothelial Lipase Antibody

LIPG, lipase, endothelial, EDL, EL, PRO719, endothelial cell-derived lipase, endothelial lipase, lipoprotein lipase H

CATALOG NO.: 46-741

HOST:

Goat

CLONALITY:

Polyclonal

INFORMATION:

Endothelial Lipase Antibody.

SOURCE:

Endothelial Lipase antibody was raised against a synthetic peptide of Endothelial Lipase.

PROTEIN ACCESSION NUMBER(S) :

NP_006024.1

SPECIES REACTIVITY:

Human

TESTED APPLICATION:

WB,E

APPLICATION:

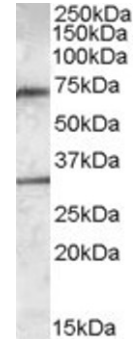
Peptide ELISA: antibody detection limit dilution 1:16,000.
Western Blot: Approx. 70kDa band observed in Human Liver lysates (calculated MW of 56.8kDa according to NP_006024.1). The observed molecular weight corresponds to earlier findings in literature with different antibodies (Gauster et al , J Clin Endocrinol Metab. 2007 Jun;92(6):2256-63. Epub 2007 Mar 13.; PMID: 17356047). Recommended concentration: 0.3-1µg/ml. An additional band of unknown identity was also consistently observed at 30kDa. This band was successfully blocked by incubation with the immunising peptide.

PURIFICATION:

Purified from goat serum by ammonium sulphate precipitation followed by antigen affinity chromatography using the immunizing peptide.

BUFFER:

Endothelial Lipase antibody is supplied as 0.1mg of purified antibody. 0.5 mg/ml in Tris saline, 0.02% sodium azide, pH7.3 with 0.5% bovine serum albumin.



Western blot analysis of Endothelial Lipase in Human Liver lysate (35µg protein in RIPA buffer) using Endothelial Lipase Antibody (0.3µg/ml).

STORAGE:

Aliquot and store at -20°C. Minimize freezing and thawing.

REFERENCE:

Jin W, Wang X, Millar JS, Quertermous T, Rothblat GH, Glick JM, Rader DJ. Hepatic proprotein convertases modulate HDL metabolism. Cell Metab. 2007 Aug;6(2):129-36.

USER NOTES:

When working with antibodies optimal dilutions/concentrations should be determined by the end user for each application. The information provided is a guideline for antibody use. As with all ProSci antibodies, this antibody is for research use only.