

IGFBP3 Antibody

IGFBP3, insulin-like growth factor binding protein 3, tcag7.703, BP-53, IBP3, IGF-binding protein 3, acid stable subunit of the 140 K IGF complex, binding protein 29, binding protein 53, growth hormone-dependent binding protein

CATALOG NO.: 46-676

HOST:

Goat

CLONALITY:

Polyclonal

INFORMATION:

IGFBP3 Antibody. This antibody is expected to recognise both reported isoforms (NP_001013416.1 and NP_000589.2).

SOURCE:

IGFBP3 antibody was raised against a synthetic peptide of IGFBP3.

PROTEIN ACCESSION NUMBER(S) :

NP_001013416.1, NP_000589.2

SPECIES REACTIVITY:

Human, Mouse, Rat, Dog

TESTED APPLICATION:

Western Blot, ELISA

APPLICATION:

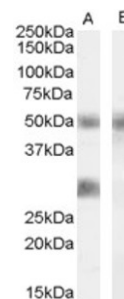
Peptide ELISA: antibody detection limit dilution 1:64,000.
Western Blot: Approx 28kDa band observed in Human Breast cancer lysates (calculated MW of 31.7kDa according to NP_001013416.1 and 32.2kDa according to NP_000589.2). Recommended concentration: 0.0

PURIFICATION:

Purified from goat serum by ammonium sulphate precipitation followed by antigen affinity chromatography using the immunizing peptide.

BUFFER:

0.1mg of purified antibody. 0.5 mg/ml in Tris saline, 0.02% sodium azide, pH7.3 with 0.5% bovine serum albumin.



Western blot analysis of IGFBP3 in Human Breast cancer lysate (35µg protein in RIPA buffer) with (B) and without (A) blocking with the immunising peptide. Primary incubation was 1 hour. Detected by chemiluminescence using IGFBP3 antibody (0.02µg/ml).

STORAGE:

Aliquot and store at -20°C. Minimize freezing and thawing.

REFERENCE:

Lin J, Manson JE, Lee IM, Cook NR, Buring JE, Zhang SM. Intakes of calcium and vitamin D and breast cancer risk in women. Arch Intern Med. 2007 May 28;167(10):1050-9.

USER NOTES:

When working with antibodies optimal dilutions/concentrations should be determined by the end user for each application. The information provided is a guideline for antibody use. As with all ProSci antibodies, this antibody is for research use only.