

ADRB3 Antibody

ADRB3, adrenergic, beta-3-, receptor, BETA3AR, Beta-3 Adrenergic Receptor

CATALOG NO.: 46-623

HOST:

Goat

CLONALITY:

Polyclonal

INFORMATION:

ADRB3 Antibody.

SOURCE:

ADRB3 antibody was raised against a synthetic peptide of ADRB3.

PROTEIN ACCESSION NUMBER(S) :

NP_000016.1

SPECIES REACTIVITY:

Human

TESTED APPLICATION:

Western Blot, ELISA

APPLICATION:

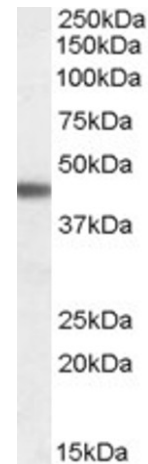
Peptide ELISA: antibody detection limit dilution 1:128,000.
Western Blot: Approx 45kDa band observed in Human Brain (Cerebellum, Cerebral Cortex, Frontal Cortex) lysates (calculated MW of 43.5kDa according to NP_000016.1).
Recommended concentration: 0.03

PURIFICATION:

Purified from goat serum by ammonium sulphate precipitation followed by antigen affinity chromatography using the immunizing peptide.

BUFFER:

0.1mg of purified antibody. 0.5 mg/ml in Tris saline, 0.02% sodium azide, pH7.3 with 0.5% bovine serum albumin.



Western blot analysis of ADRB3 in Human Brain (Cerebral Cortex) lysate (35µg protein in RIPA buffer) using ADRB3 antibody (0.03µg/ml).

STORAGE:

Aliquot and store at -20°C. Minimize freezing and thawing.

REFERENCE:

Pierola J, Barcelo A, de la Pena M, Barbe F, B Soriano J, S Armengol A, Martinez C, Agusti A. THE Trp64Arg polymorphism of the beta (3) adrenergic receptor is associated with increased body mass index in patients with sleep apnoea. Eur Respir J. 2007 Jul 11; [Epub ahead of print]

USER NOTES:

When working with antibodies optimal dilutions/concentrations should be determined by the end user for each application. The information provided is a guideline for antibody use. As with all ProSci antibodies, this antibody is for research use only.