

ABCB5 Antibody

ATP-binding cassette, sub-family B (MDR/TAP), member 5 , ABCB5alpha, ABCB5beta, EST422562, ATP-binding cassette, sub-family B, member 5N: P-glycoprotein ABCB5

CATALOG NO.: 46-620

HOST:

Goat

CLONALITY:

Polyclonal

INFORMATION:

ABCB5 Antibody.

SOURCE:

ABCB5 antibody was raised against a synthetic peptide of ABCB5.

PROTEIN ACCESSION NUMBER(S) :

NP_848654.3

SPECIES REACTIVITY:

Human

TESTED APPLICATION:

Western Blot, ELISA

APPLICATION:

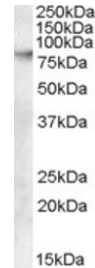
Peptide ELISA: antibody detection limit dilution 1:128,000.
Western Blot: Approx 80kDa band observed in lysates of A431 (calculated MW of 89.8kDa according to NP_848654.3). Recommended concentration: 0.03-0.1µg/ml.

PURIFICATION:

Purified from goat serum by ammonium sulphate precipitation followed by antigen affinity chromatography using the immunizing peptide.

BUFFER:

0.1mg of purified antibody. 0.5 mg/ml in Tris saline, 0.02% sodium azide, pH7.3 with 0.5% bovine serum albumin.



Western blot analysis of ABCB5 in A431 cell lysate (35µg protein in RIPA buffer) using ABCB5 antibody (0.03µg/ml).

STORAGE:

Aliquot and store at -20°C. Minimize freezing and thawing.

REFERENCE:

Frank NY, Margaryan A, Huang Y, Schatton T, Waaga-Gasser AM, Gasser M, Sayegh MH, Sadee W, Frank MH. ABCB5-mediated doxorubicin transport and chemoresistance in human malignant melanoma. *Cancer Res.* 2005 May 15;65(10):4320-33.

USER NOTES:

When working with antibodies optimal dilutions/concentrations should be determined by the end user for each application. The information provided is a guideline for antibody use. As with all ProSci antibodies, this antibody is for research use only.