

## WASP Antibody

*WAS, THC, IMD2, WASP, Wiskott-Aldrich syndrome (eczema-thrombocytopenia), thrombocytopenia 1 (X-linked), Wiskott-Aldrich syndrome (eczema-thrombocytopenia) protein*

**CATALOG NO.:** 46-591

**HOST:**

Goat

**CLONALITY:**

Polyclonal

**INFORMATION:**

WASP Antibody. No cross-reactivity expected with N WASP (WASL).

**SOURCE:**

WASP antibody was raised against a synthetic peptide of WASP.

**PROTEIN ACCESSION NUMBER(S) :**

NP\_000368.1

**SPECIES REACTIVITY:**

Human, Mouse, Rat, Dog

**TESTED APPLICATION:**

WB, E

**APPLICATION:**

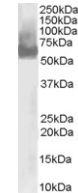
Peptide ELISA: antibody detection limit dilution 1:128,000.  
Western Blot: Approx 60kDa band observed in Human lysates of Tcell line MOLT4 and monocytic cell line U937 (calculated MW of 52.9kDa according to NP\_000368.1).  
Recommended concentration: 0.03-0.1 µg/ml.

**PURIFICATION:**

Purified from goat serum by ammonium sulphate precipitation followed by antigen affinity chromatography using the immunizing peptide.

**BUFFER:**

0.1mg of purified antibody in 0.5 mg/ml in Tris saline, 0.02% sodium azide, pH7.3 with 0.5% bovine serum albumin.



Western blot analysis of WASP in U937 lysate (RIPA buffer, 30µg total protein per lane) using WASP antibody (0.03µg/ml).

**STORAGE:**

Aliquot and store at -20°C. Minimize freezing and thawing.

**REFERENCE:**

Yamaguchi H, Lorenz M, Kempiak S, Sarmiento C, Coniglio S, Symons M, Segall J, Eddy R, Miki H, Takenawa T, Condeelis J. Molecular mechanisms of invadopodium formation: the role of the N-WASP-Arp2/3 complex pathway and cofilin. *J Cell Biol.* 2005 Jan 31;168

**USER NOTES:**

When working with antibodies optimal dilutions/concentrations should be determined by the end user for each application. The information provided is a guideline for antibody use. As with all ProSci antibodies, this antibody is for research use only.