

TSPO Antibody

TSPO, translocator protein (18kDa), BZRP, DBI, IBP, MBR, PBR, PKBS, PTBR, mDRC, pk18, OTTHUMP00000028891, benzodiazepine receptor (peripheral), benzodiazepine peripheral binding site, mitochondrial benzodiazepine receptor, peripheral benzodiazepine receptor, peripheral-type benzodiazepine receptor

CATALOG NO.: 46-538

HOST:

Goat

CLONALITY:

Polyclonal

INFORMATION:

TSPO Antibody. This antibody is expected to recognise one isoform (NP_000705.2) only.

SOURCE:

TSPO antibody was raised against a synthetic peptide of TSPO.

PROTEIN ACCESSION NUMBER(S) :

NP_000705.2

SPECIES REACTIVITY:

Human

TESTED APPLICATION:

WB, E

APPLICATION:

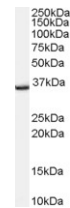
Peptide ELISA: antibody detection limit dilution 1:128,000. Approx 35kDa band observed in Human Brain lysates (calculated MW of 18.8kDa according to NP_000705.2). The observed molecular weight corresponds to earlier findings in literature with different antibodies (Delavoie et al , Biochemistry. 2003 Apr 22;42(15):4506-19.; PMID: 12693947). Recommended concentration: 0.1-0.3µg/ml.

PURIFICATION:

Purified from goat serum by ammonium sulphate precipitation followed by antigen affinity chromatography using the immunizing peptide.

BUFFER:

0.1mg of purified antibody in 0.5 mg/ml in Tris saline, 0.02% sodium azide, pH7.3 with 0.5% bovine serum albumin.



Western blot analysis of TSPO in Human Brain lysate (35µg protein in RIPA buffer) using TSPO antibody (0.1µg/ml).

STORAGE:

Aliquot and store at -20°C. Minimize freezing and thawing.

REFERENCE:

Papadopoulos V, Baraldi M, Guilarte TR, Knudsen TB, Lacapere JJ, Lindemann P, Norenberg MD, Nutt D, Weizman A, Zhang MR, Gavish M. Translocator protein (18kDa): new nomenclature for the peripheral-type benzodiazepine receptor based on its structure and mol

USER NOTES:

When working with antibodies optimal dilutions/concentrations should be determined by the end user for each application. The information provided is a guideline for antibody use. As with all ProSci antibodies, this antibody is for research use only.