

TAGLN Antibody

TAGLN, SM22, SMCC, WS3-10, transgelin, SM22-alpha, DKFZp686P11128, TAGLN1

CATALOG NO.: 46-467

HOST:

Goat

CLONALITY:

Polyclonal

INFORMATION:

TAGLN Antibody. NP_003177.2 and NP_001001522.1 represent identical protein.

SOURCE:

TAGLN antibody was raised against a synthetic peptide of TAGLN.

PROTEIN ACCESSION NUMBER(S) :

NP_003177.2, NP_001001522.1

SPECIES REACTIVITY:

Human, Mouse, Rat

TESTED APPLICATION:

WB, E

APPLICATION:

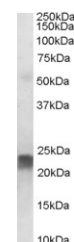
Peptide ELISA: antibody detection limit dilution 1:2,000.
Western Blot: Approx 23kDa band observed in Human Heart, Placenta and Testes lysates (calculated MW of 22.6kDa according to NP_003177.2 and NP_001001522.1).
Recommended concentration: 0.001-0.003µg/ml.

PURIFICATION:

Purified from goat serum by ammonium sulphate precipitation followed by antigen affinity chromatography using the immunizing peptide.

BUFFER:

0.1mg of purified antibody in 0.5 mg/ml in Tris saline, 0.02% sodium azide, pH7.3 with 0.5% bovine serum albumin.



Western blot analysis of TAGLN in Human Placenta lysate (RIPA buffer, 35µg total protein per lane) using TAGLN antibody (0.001µg/ml).

STORAGE:

Aliquot and store at -20°C. Minimize freezing and thawing.

REFERENCE:

Nishida W, Kitami Y, Abe M, Hiwada K. Gene cloning and nucleotide sequence of SM22 alpha from the chicken gizzard smooth muscle. *Biochem Int.* 1991 Mar;23(4):663-8.

USER NOTES:

When working with antibodies optimal dilutions/concentrations should be determined by the end user for each application. The information provided is a guideline for antibody use. As with all ProSci antibodies, this antibody is for research use only.