

## STS2 Antibody

*UBASH3A, ubiquitin associated and SH3 domain containing, A, TULA, T-cell ubiquitin ligand protein, Suppressor of T-cell receptor signaling 2, STS2 CBL-interacting protein 4, CLIP4*

**CATALOG NO.: 46-446**

**HOST:**

Goat

**CLONALITY:**

Polyclonal

**INFORMATION:**

STS2 Antibody. This antibody is expected to recognize both reported isoforms (NP\_061834.1 and NP\_001001895.1).

**SOURCE:**

STS2 antibody was raised against a synthetic peptide near an internal region of STS2.

**PROTEIN ACCESSION NUMBER(S) :**

NP\_061834.1, NP\_001001895.1

**SPECIES REACTIVITY:**

Human, Dog

**TESTED APPLICATION:**

E, IHC

**APPLICATION:**

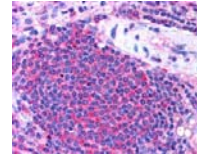
Peptide ELISA: antibody detection limit dilution 1:64,000.  
Western Blot: Preliminary experiments gave an approx 48kDa band in lysates of B-cell line Daudi after 0.1µg/ml antibody staining. Please note that currently we cannot find an explanation in the literature for the band we observe given the calculated size of 74.1kDa according to NP\_061834.1 and 69.8kDa according to NP\_001001895.1. The 48kDa band was successfully blocked by incubation with the immunizing peptide.

**PURIFICATION:**

Purified from goat serum by ammonium sulphate precipitation followed by antigen affinity chromatography using the immunizing peptide.

**BUFFER:**

0.1mg of purified antibody in 0.5 mg/ml in Tris saline, 0.02% sodium azide, pH7.3 with 0.5% bovine serum albumin.



Western blot analysis of STS2 in paraffin embedded Human Spleen using STS2 antibody (2.5µg/ml).

**STORAGE:**

Aliquot and store at -20°C. Minimize freezing and thawing.

**REFERENCE:**

Kowanetz K, Crosetto N, Haglund K, Schmidt MH, Heldin CH, Dikic I. Suppressors of T-cell receptor signaling Sts-1 and Sts-2 bind to Cbl and inhibit endocytosis of receptor tyrosine kinases. J Biol Chem. 2004 Jul 30;279(31):32786-95. Epub 2004 May 24.

**USER NOTES:**

When working with antibodies optimal dilutions/concentrations should be determined by the end user for each application. The information provided is a guideline for antibody use. As with all ProSci antibodies, this antibody is for research use only.