

## Smad9 Antibody

*SMAD9, SMAD, mothers against DPP homolog 9 (Drosophila)], HGNC:6774, MADH6, MADH9, SMAD8A, SMAD8B, MAD (mothers against decapentaplegic, Drosophila) homolog 9, MAD, mothers against decapentaplegic homolog 9, MAD, mothers against decapentaplegic homolog 9 (Drosophila), Mothers against decapentaplegic, drosophila, homolog of, 9*

**CATALOG NO.: 46-383**

**HOST:**

Goat

**CLONALITY:**

Polyclonal

**INFORMATION:**

Smad9 Antibody. This antibody is not expected to cross-react with SMAD1 and SMAD5.

**SOURCE:**

Smad9 antibody was raised against a synthetic peptide of Smad9.

**PROTEIN ACCESSION NUMBER(S) :**

NP\_005896.1

**SPECIES REACTIVITY:**

Human, Mouse, Rat, Dog

**TESTED APPLICATION:**

WB, E

**APPLICATION:**

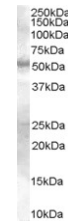
Peptide ELISA: antibody detection limit dilution 1:64,000.  
Western Blot: Approx 50kDa band observed in Human Skin lysates (calculated MW of 48.6kDa according to NP\_005896.1). Recommended concentration: 0.3-1.0 µg/ml.

**PURIFICATION:**

Purified from goat serum by ammonium sulphate precipitation followed by antigen affinity chromatography using the immunizing peptide.

**BUFFER:**

0.1mg of purified antibody in 0.5 mg/ml in Tris saline, 0.02% sodium azide, pH7.3 with 0.5% bovine serum albumin.



Western blot analysis of Smad9 in Human Skin lysate (35µg protein in RIPA buffer) using Smad9 antibody (0.3µg/ml).

**STORAGE:**

Aliquot and store at -20°C. Minimize freezing and thawing.

**REFERENCE:**

Shi Y, Massague J. Mechanisms of TGF-beta signaling from cell membrane to the nucleus. Cell. 2003 Jun 13;113(6):685-700. Review.

**USER NOTES:**

When working with antibodies optimal dilutions/concentrations should be determined by the end user for each application. The information provided is a guideline for antibody use. As with all ProSci antibodies, this antibody is for research use only.