

SLC6A4 Antibody

SLC6A4, solute carrier family 6 (neurotransmitter transporter, serotonin), member 4, HGNC:11050, 5-HTT, HTT, OCD1, SERT, hSERT, 5-hydroxytryptamine transporter, 5HT transporter, Na⁺/Cl⁻ dependent serotonin transporter, serotonin transporter, sodium-dependent serotonin transporter, solute carrier family 6 member 4

CATALOG NO.: 46-377

HOST:

Goat

CLONALITY:

Polyclonal

INFORMATION:

SLC6A4 Antibody.

SOURCE:

SLC6A4 antibody was raised against a synthetic peptide of SLC6A4.

PROTEIN ACCESSION NUMBER(S) :

NP_001036.1

SPECIES REACTIVITY:

Human

TESTED APPLICATION:

WB, E

APPLICATION:

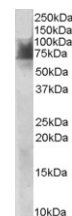
Peptide ELISA: antibody detection limit dilution 1:32,000.
Western Blot: Approx 70-75kDa bands observed in Human Duodenum lysates (calculated MW of 70.3kDa according to NP_001036.1). Recommended concentration: 1-3µg/ml.

PURIFICATION:

Purified from goat serum by ammonium sulphate precipitation followed by antigen affinity chromatography using the immunizing peptide.

BUFFER:

0.1mg of purified antibody in 0.5 mg/ml in Tris saline, 0.02% sodium azide, pH7.3 with 0.5% bovine serum albumin.



Western blot analysis of SLC6A4 in Human Duodenum lysate (RIPA buffer, 30µg total protein per lane) using SLC6A4 antibody (1µg/ml).

STORAGE:

Aliquot and store at -20°C. Minimize freezing and thawing.

REFERENCE:

Voeller KK. Attention-deficit hyperactivity disorder (ADHD). J Child Neurol. 2004 Oct;19(10):798-814. Review.

USER NOTES:

When working with antibodies optimal dilutions/concentrations should be determined by the end user for each application. The information provided is a guideline for antibody use. As with all ProSci antibodies, this antibody is for research use only.