

## Serotonin receptor 1B Antibody

*HTR1B, 5-hydroxytryptamine (serotonin) receptor 1B, 5-HT1B, 5-HT1DB, HTR1D2, HTR1DB, S12*

**CATALOG NO.:** 46-355

**HOST:**

Goat

**CLONALITY:**

Polyclonal

**INFORMATION:**

Serotonin receptor 1B Antibody.

**SOURCE:**

Serotonin receptor 1B antibody was raised against a synthetic peptide of Serotonin receptor 1B.

**PROTEIN ACCESSION NUMBER(S) :**

NP\_000854.1

**SPECIES REACTIVITY:**

Human, Mouse, Rat, Dog

**TESTED APPLICATION:**

WB, E

**APPLICATION:**

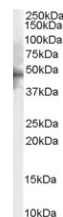
Peptide ELISA: antibody detection limit dilution 1:8,000.  
Western Blot: Approx 48kDa band observed in Human Brain lysates (calculated MW of 43.6kDa according to NP\_000854.1). Recommended concentration: 1-3µg/ml.

**PURIFICATION:**

Purified from goat serum by ammonium sulphate precipitation followed by antigen affinity chromatography using the immunizing peptide.

**BUFFER:**

0.1mg of purified antibody in 0.5 mg/ml in Tris saline, 0.02% sodium azide, pH7.3 with 0.5% bovine serum albumin.



Western blot analysis of Serotonin receptor 1B in Human Brain lysate (35µg protein in RIPA buffer) using Serotonin receptor 1B antibody (2µg/ml).

**STORAGE:**

Aliquot and store at -20°C. Minimize freezing and thawing.

**REFERENCE:**

Svenningsson P, Chergui K, Rachleff I, Flajolet M, Zhang X, El Yacoubi M, Vaugeois JM, Nomikos GG, Greengard P. Alterations in 5-HT1B receptor function by p11 in depression-like states. *Science*. 2006 Jan 6;311(5757):77-80.

**USER NOTES:**

When working with antibodies optimal dilutions/concentrations should be determined by the end user for each application. The information provided is a guideline for antibody use. As with all ProSci antibodies, this antibody is for research use only.