

SALL4 Antibody

SALL4, *sal-like 4 (Drosophila)*, AA407717, AL022809, AW536104, C330011P20Rik, C78083, C78563, *Tex20*, *sal-like 4*

CATALOG NO.: 46-333

HOST:

Goat

CLONALITY:

Polyclonal

INFORMATION:

SALL4 Antibody. This antibody is expected to recognize isoform a (NP_780512.2) and isoform b (NP_958797.2).

SOURCE:

SALL4 antibody was raised against a synthetic peptide of SALL4.

PROTEIN ACCESSION NUMBER(S) :

NP_780512.2, NP_958797.2, NP_958798.2

SPECIES REACTIVITY:

Mouse, Rat

TESTED APPLICATION:

WB, E

APPLICATION:

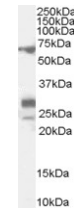
Peptide ELISA: antibody detection limit dilution 1:32,000.
Western Blot: Approx 70kDa band observed in Rat Spleen and Testis lysates (calculated MW of 66.2kDa according to NP_958797.2). Recommended concentration: 0.1-0.3µg/ml. Additional bands of unknown identity was also consistently observed at 28+24kDa. These bands were successfully blocked by incubation with the immunising peptide.

PURIFICATION:

Purified from goat serum by ammonium sulphate precipitation followed by antigen affinity chromatography using the immunizing peptide.

BUFFER:

0.1mg of purified antibody in 0.5 mg/ml in Tris saline, 0.02% sodium azide, pH7.3 with 0.5% bovine serum albumin.



Western blot analysis of SALL4 in Rat Testis lysate (35µg protein in RIPA buffer) using SALL4 antibody (0.1µg/ml).

STORAGE:

Aliquot and store at -20°C. Minimize freezing and thawing.

REFERENCE:

Wang J, Rao S, Chu J, Shen X, Levasseur DN, Theunissen TW, Orkin SH. A protein interaction network for pluripotency of embryonic stem cells. *Nature*. 2006 Nov 16;444(7117):364-8. Epub 2006 Nov 8.

USER NOTES:

When working with antibodies optimal dilutions/concentrations should be determined by the end user for each application. The information provided is a guideline for antibody use. As with all ProSci antibodies, this antibody is for research use only.