

Renalase Antibody

C10orf59, chromosome 10 open reading frame 59, FLJ11218, renalase

CATALOG NO.: 46-279

HOST:

Goat

CLONALITY:

Polyclonal

INFORMATION:

Renalase Antibody. This antibody is expected to recognize both reported isoforms (NP_001026879.1 and NP_060833.1).

SOURCE:

Renalase antibody was raised against a synthetic peptide (aa 134-147) of Renalase.

PROTEIN ACCESSION NUMBER(S) :

NP_001026879.1, NP_060833.1

SPECIES REACTIVITY:

Human, Mouse, Rat

TESTED APPLICATION:

WB, E

APPLICATION:

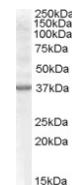
Peptide ELISA: antibody detection limit dilution 1:32,000.
Western Blot: Approx 37kDa band observed in Mouse Kidney and Rat Kidney lysates (calculated MW of 37.8kDa according to Human NP_001026879.1 and 35.0kDa according to Rat NP_001014189.1). Recommended concentration: 0.5-1.5µg/ml.

PURIFICATION:

Purified from goat serum by ammonium sulphate precipitation followed by antigen affinity chromatography using the immunizing peptide.

BUFFER:

0.1mg of purified antibody in 0.5 mg/ml in Tris saline, 0.02% sodium azide, pH7.3 with 0.5% bovine serum albumin.



Western blot analysis of Renalase in Rat Kidney lysate (35µg protein in RIPA buffer) using Renalase antibody (0.5µg/ml).

STORAGE:

Aliquot and store at -20°C. Minimize freezing and thawing.

REFERENCE:

Xu J, Li G, Wang P, Velazquez H, Yao X, Li Y, Wu Y, Peixoto A, Crowley S, Desir GV. Renalase is a novel, soluble monoamine oxidase that regulates cardiac function and blood pressure. *J Clin Invest.* 2005 May;115(5):1275-80. Epub 2005 Apr 7.

USER NOTES:

When working with antibodies optimal dilutions/concentrations should be determined by the end user for each application. The information provided is a guideline for antibody use. As with all ProSci antibodies, this antibody is for research use only.