

## RASSF7 Antibody

*RASSF7, Ras association (RalGDS/AF-6) domain family 7, C11orf13, HRAS1, HRC1, MGC126069, MGC126070, HRAS1-related cluster-1*

**CATALOG NO.:** 46-274

**HOST:**

Goat

**CLONALITY:**

Polyclonal

**INFORMATION:**

RASSF7 Antibody.

**SOURCE:**

RASSF7 antibody was raised against a synthetic peptide of RASSF7.

**PROTEIN ACCESSION NUMBER(S) :**

NP\_003466.1

**SPECIES REACTIVITY:**

Human

**TESTED APPLICATION:**

WB, E

**APPLICATION:**

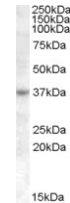
Peptide ELISA: antibody detection limit dilution 1:8,000.  
Western Blot: Approx 37kDa band observed in lysates of cell line Jurkat (calculated MW of 39.9kDa according to NP\_003466.1). Recommended concentration: 1-3µg/ml.

**PURIFICATION:**

Purified from goat serum by ammonium sulphate precipitation followed by antigen affinity chromatography using the immunizing peptide.

**BUFFER:**

0.1mg of purified antibody in 0.5 mg/ml in Tris saline, 0.02% sodium azide, pH7.3 with 0.5% bovine serum albumin.



Western blot analysis of RASSF7 in Jurkat cell lysate (35µg protein in RIPA buffer) using RASSF7 antibody (1µg/ml).

**STORAGE:**

Aliquot and store at -20°C. Minimize freezing and thawing.

**REFERENCE:**

Sherwood V, Manbodh R, Sheppard C, Chalmers AD. RASSF7 Is a Member of a New Family of RAS Association Domain-containing Proteins and Is Required for Completing Mitosis. Mol Biol Cell. 2008 Apr;19(4):1772-82. Epub 2008 Feb 13.

**USER NOTES:**

When working with antibodies optimal dilutions/concentrations should be determined by the end user for each application. The information provided is a guideline for antibody use. As with all ProSci antibodies, this antibody is for research use only.